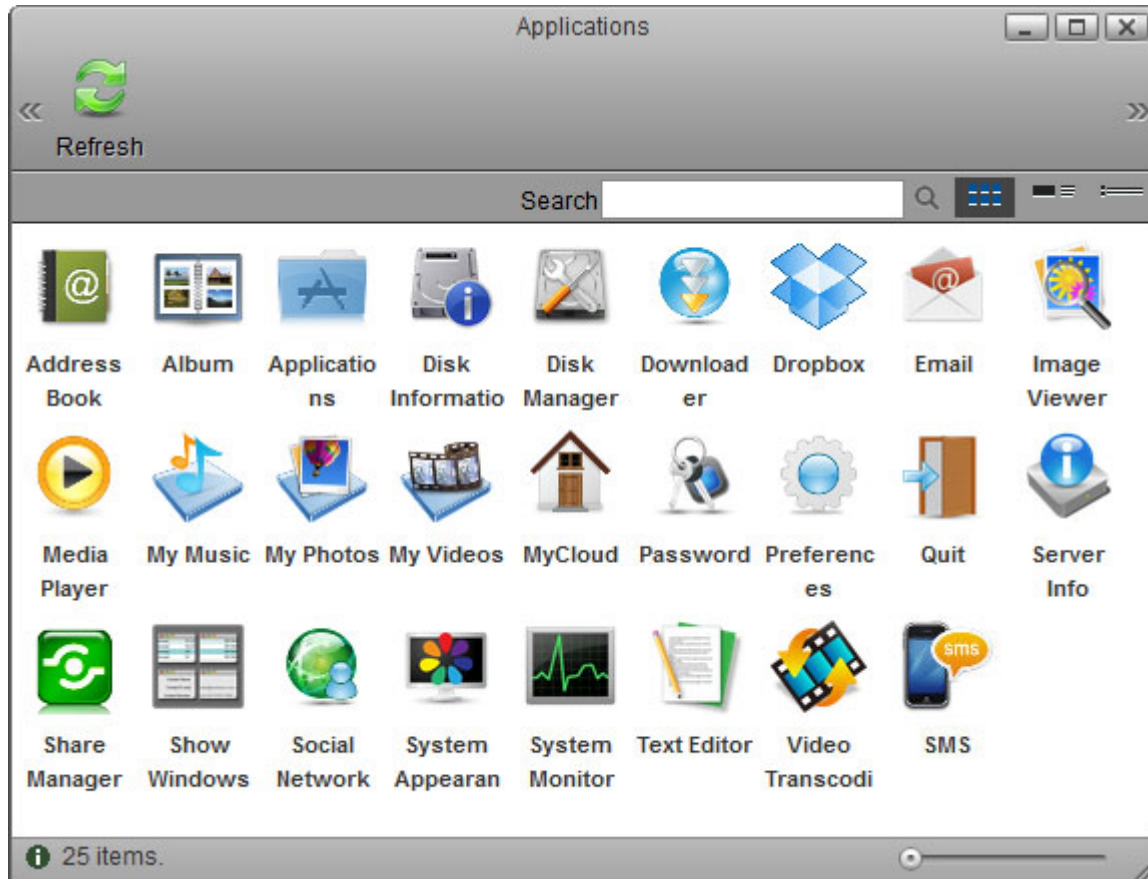


# Applications

The applications folder contains all the built-in programs of the network drive and the default shortcuts to the system settings. Double-click on any icon to start the application or open the configuration window.



Double-clicking on the icon representing the "Applications" folder itself has no effect but this icon can be used to create a shortcut on your desktop or in the toolbar that points to the "Applications" folder. Simply drag and drop the icon on the desktop or the toolbar to create a shortcut.

For more details regarding the available applications, refer to the following pages:

- [Address Book](#)
- [Album](#)
- [Applications](#)
- [Disk Information](#)
- [Disk Manager](#)
- [Downloader](#)
- [Dropbox](#)
- [Email](#)
- [Image Viewer](#)
- [Media Player](#)

- [My Music](#)
- [My Photos](#)
- [My Videos](#)
- [MyCloud](#)
- [Password](#)
- [Preferences](#)
- [Quit](#)
- [Server Info](#)
- [Share Manager](#)
- [Show Windows](#)
- [Social Network](#)
- [System Appearance](#)
- [System Monitor](#)
- [Text Editor](#)
- [Video Transcoding](#)
- [SMS](#)

From:  
<http://wiki.myakitio.com/> - **MyAkitio Wiki**

Permanent link:  
[http://wiki.myakitio.com/applications\\_applications](http://wiki.myakitio.com/applications_applications)

Last update: **2013/11/26 09:50**

