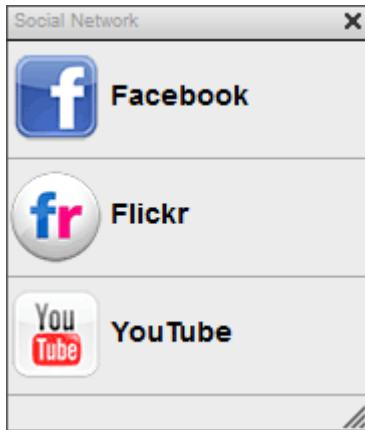


Social Network

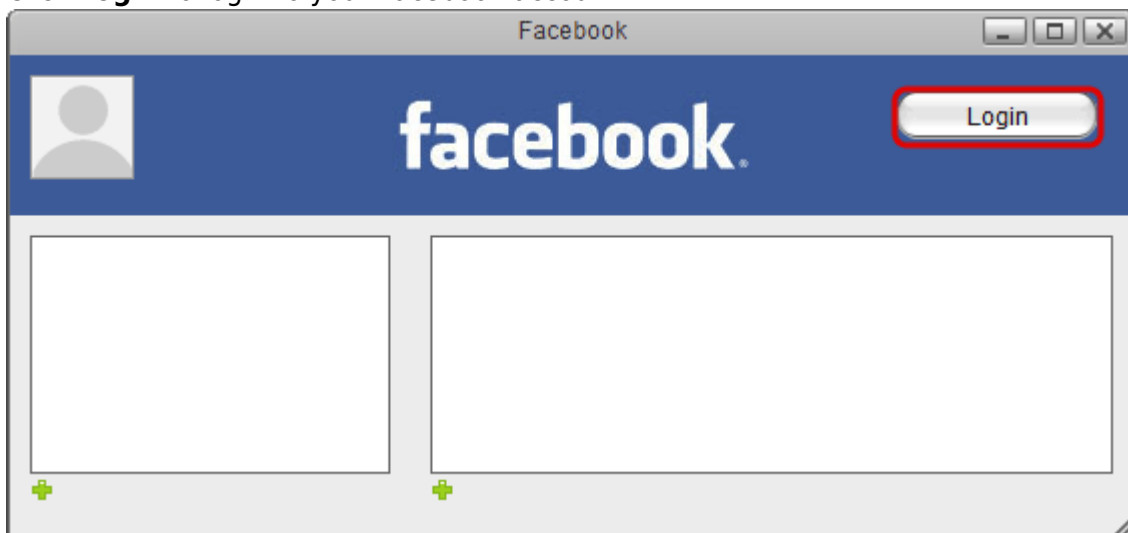
The social network application provides online access to social networking sites such as Facebook, Flickr and Youtube. The application allows you to share your media files with the social network community directly from within the web interface of the network drive.



Facebook

The Facebook application allows you to post your images from the network drive to your Facebook album(s).

1. Click on the **Facebook** icon to open the application.
2. Depending on your browser's security settings, you may have to temporarily **allow pop-up windows** in order to login to Facebook. Please keep an eye on any warnings from your browser after you click on the Facebook icon.
3. Click **Login** to log into your Facebook account.



4. Enter the email and password of your Facebook account and click **Log In**.

f Facebook

Log in to use your Facebook account with MyiSharing.

Email or Phone:

Password:

Keep me logged in

[Forgot your password?](#)

[Sign up for Facebook](#) **Log In** Cancel

5. Click **Log In with Facebook**.

facebook Akitio

Learn more about how apps work now.

MyiSharing **Log In with Facebook** Cancel

68 people use this app

ABOUT THIS APP You are logging into MyiSharing as Akitio. Who can see posts this app makes for you on your Facebook timeline: [?] <input type="button" value="Public"/>	THIS APP WILL RECEIVE: <ul style="list-style-type: none">Your basic info [?]Your photos
---	---

By proceeding, you will be taken to myisharing.com · [Report App](#)

6. Click **Allow** to give the MyiSharing application access to your Facebook account.

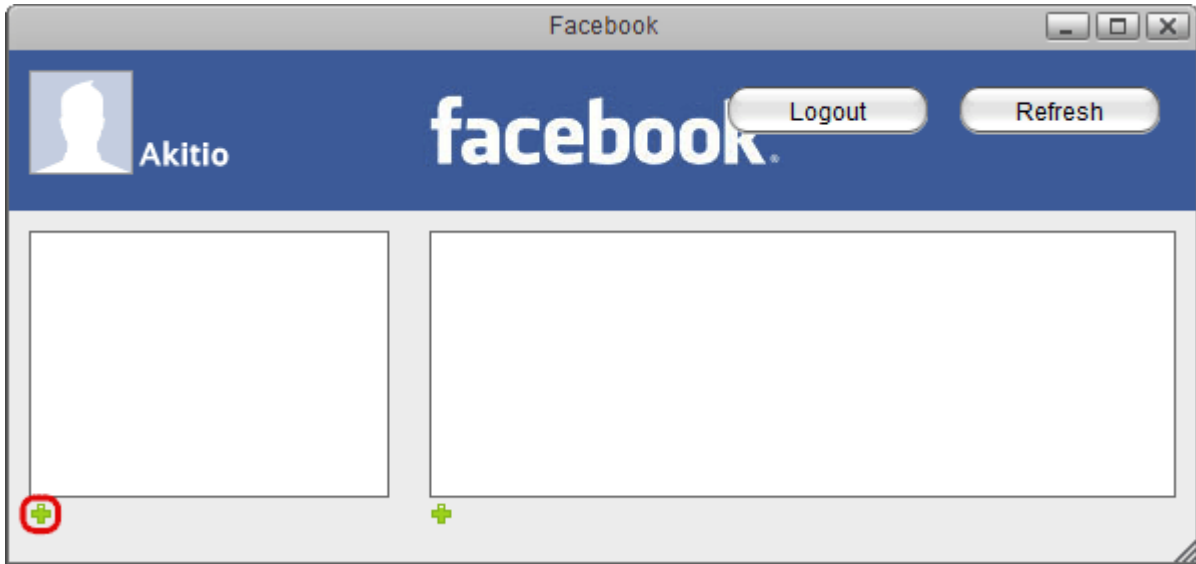
facebook Akitio

MyiSharing would also like permission to:

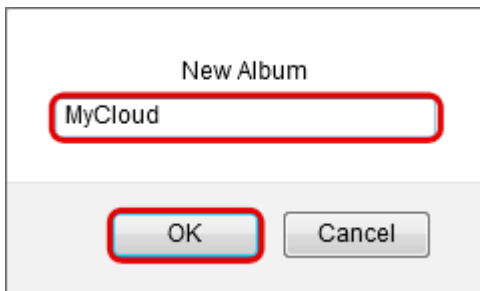
Post on your behalf ×
This app may post on your behalf, including status updates, photos and more.

Allow Skip

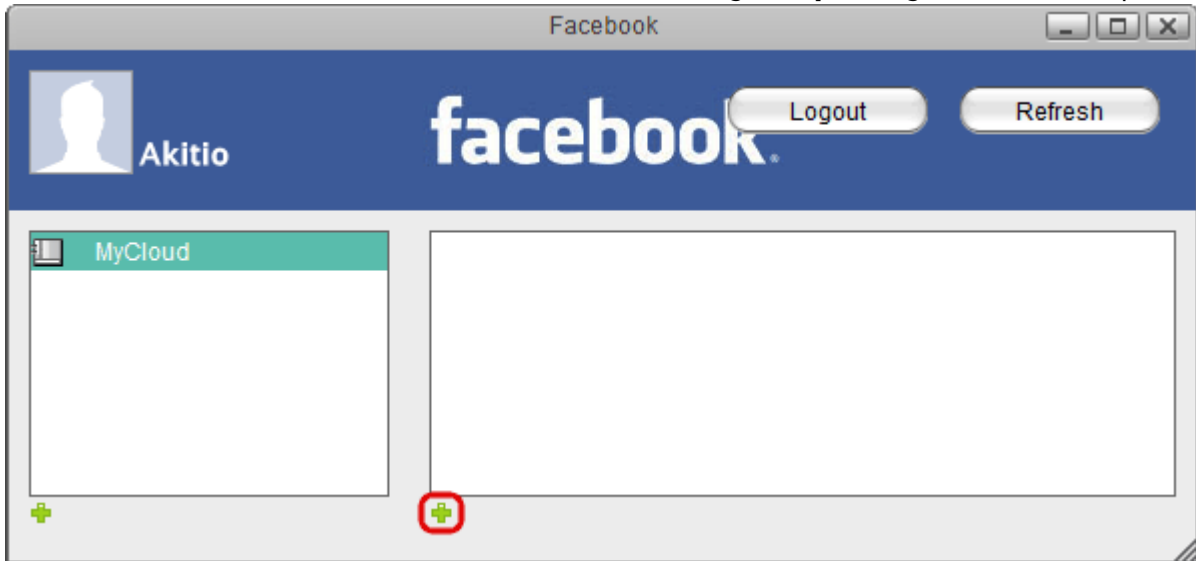
7. If you already have some photo albums on your Facebook account, you can now select one of your albums from the list or click on the first green **plus** sign to add a new album.



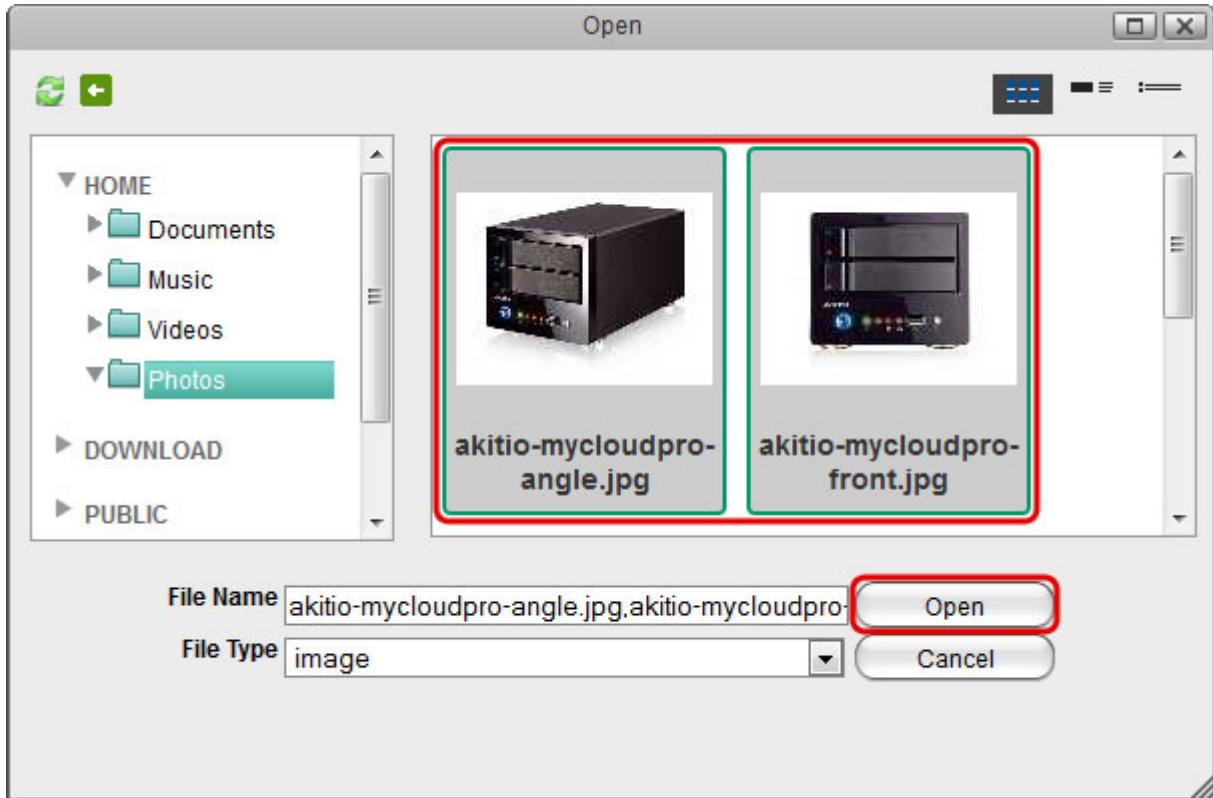
8. Enter a name for the new album and click **OK** to create it.



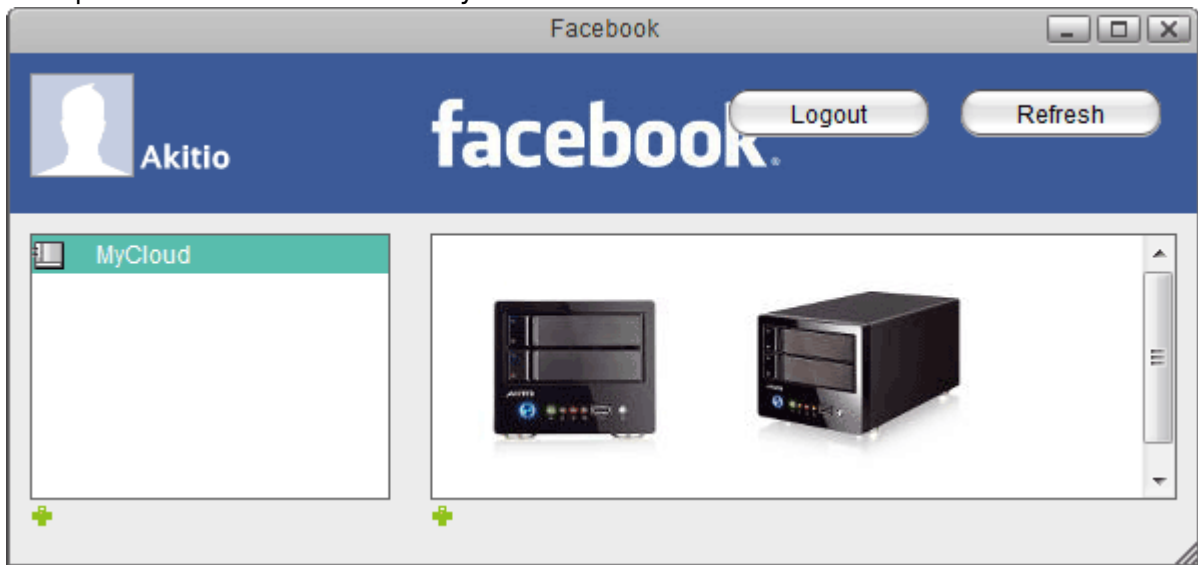
9. Select the album from the list and click on the second green **plus** sign to add some photos.



10. Locate the images that you would like to post on Facebook, select them and then click **Open**.



11. Your photos are now available for your friends to see on Facebook.



Depending on your browser's security settings, you may have to temporarily **allow pop-up windows** in order to login.

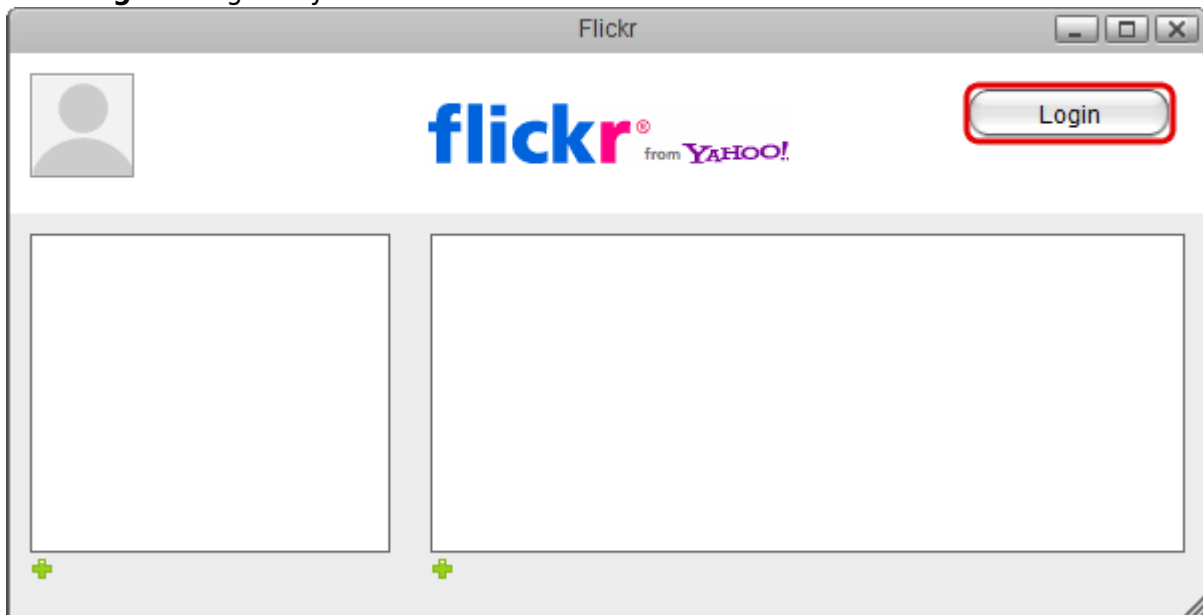
Flickr

The Flickr application allows you to post your images from the network drive to your Flickr photostream.

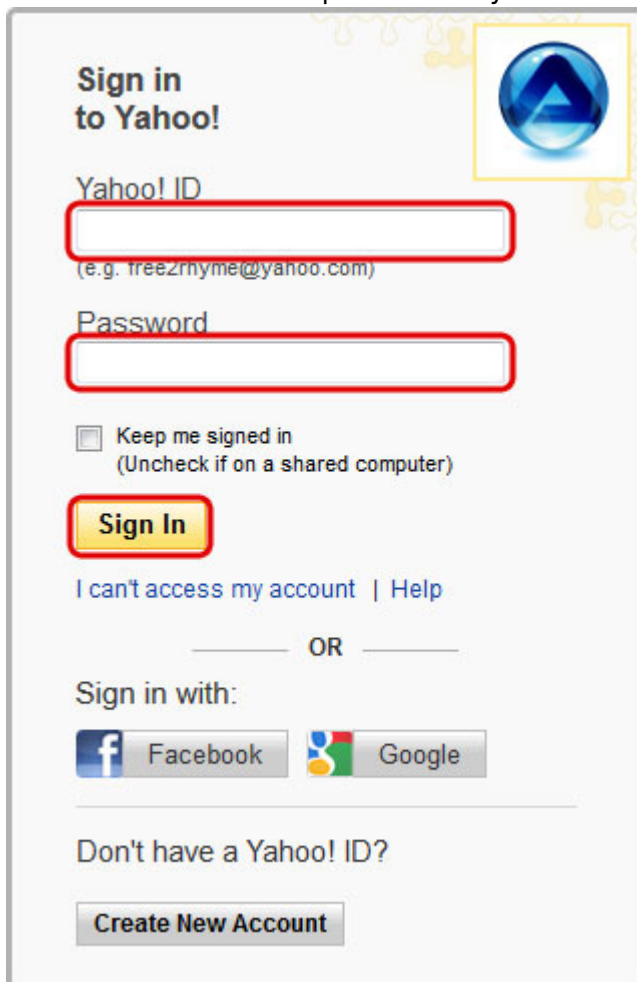
1. Click on the **Flickr** icon to open the application.
2. Depending on your browser's security settings, you may have to temporarily **allow pop-up**

windows in order to login to Flickr. Please keep an eye on any warnings from your browser after you click on the Flickr icon.

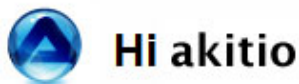
3. Click **Login** to log into your Flickr account.



4. Enter the Yahoo ID and password of your Flickr account and click **Sign In**.



5. Click **OK, I'LL AUTHORIZE IT** to give the MyiSharing application access to your Flickr account.



MySharing wants to link to your Flickr account.

This is a third-party service. If you don't trust it with access to your account, then you should not authorize it.

By authorizing this link, you'll allow **MySharing** to:

- ✔ **Access** your Flickr account (including private content)
- ✔ **Upload, Edit, and Replace** photos and videos in your account
- ✔ **Interact** with other members' photos and videos (comment, add notes, favorite)

What's going on here
Flickr encourages other users to build cool tools for you to use with, but you must authorize third parties to access your account.

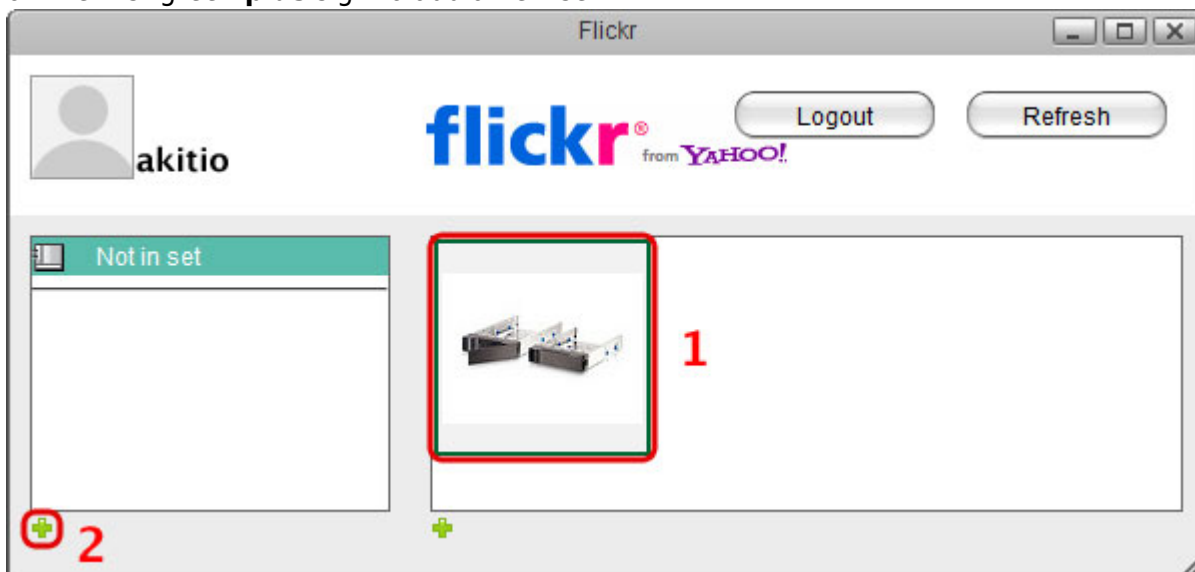
Want to know more?
A wealth of information is available on the [Flickr Services](#) page.

MySharing will *not* have permission to:

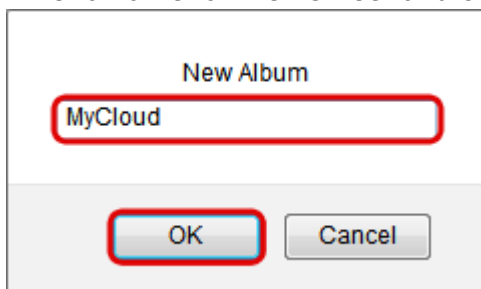
- ✘ **Delete** photos and videos from your account

OK, I'LL AUTHORIZE IT NO THANKS

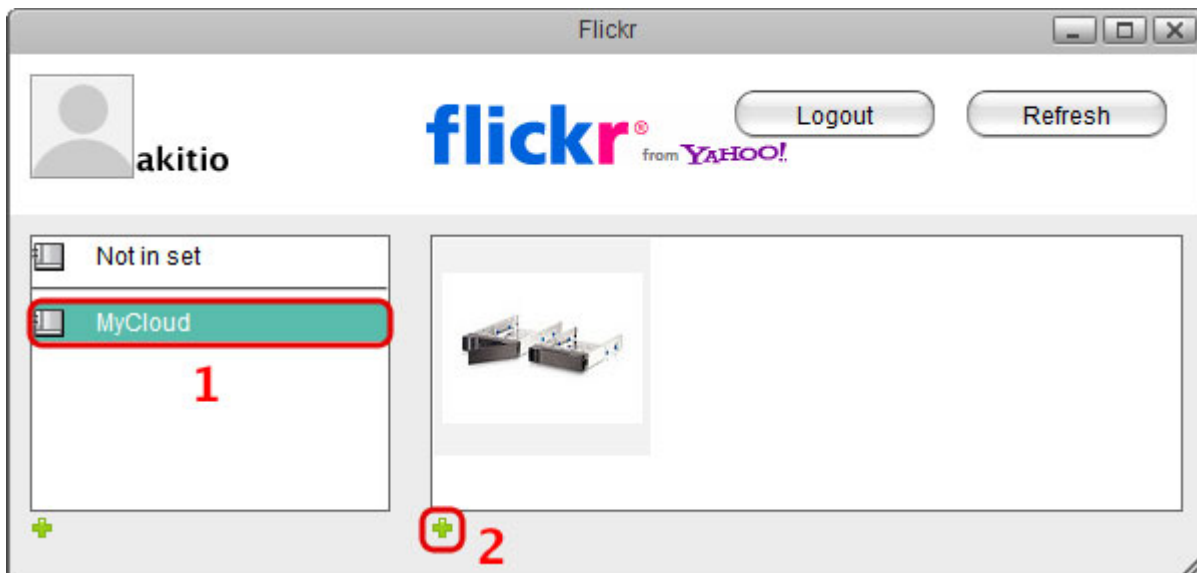
6. If you already have some photo sets in your Flickr photostream, you can now select one of your sets from the list. Otherwise, select a photo that you would like to add to the new set and click on the first green **plus** sign to add a new set.



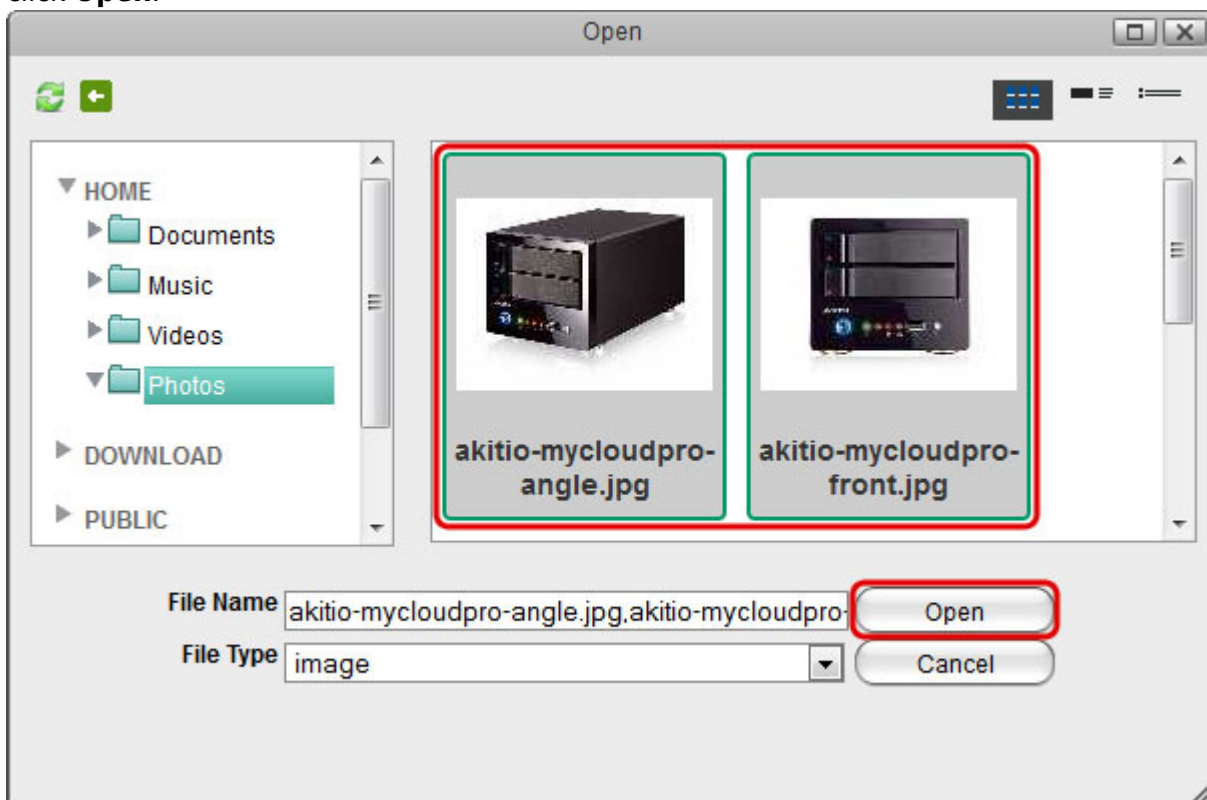
7. Enter a name for the new set and click **OK** to create it.



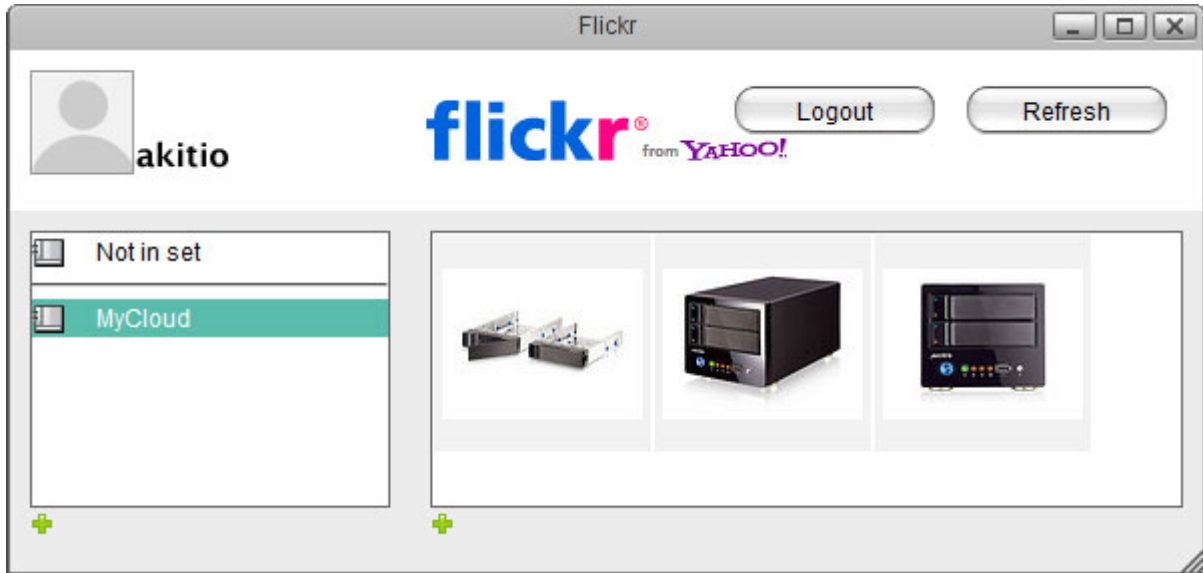
8. Select the set from the list and click on the second green **plus** sign to add some photos.



9. Locate the images that you would like to post in your Flickr photostream, select them and then click **Open**.



10. Your photos are now available for your friends to see on Flickr.



In order to add a new set, you have to select an image first. If your photostream does not contain any images yet, upload at least one image first before you create a new set.

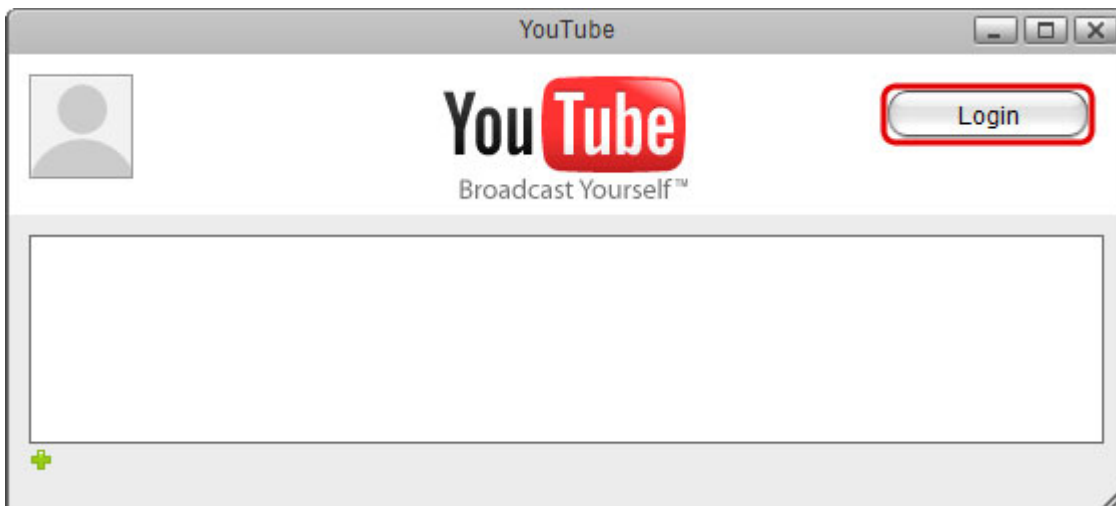


Depending on your browser's security settings, you may have to temporarily **allow pop-up windows** in order to login

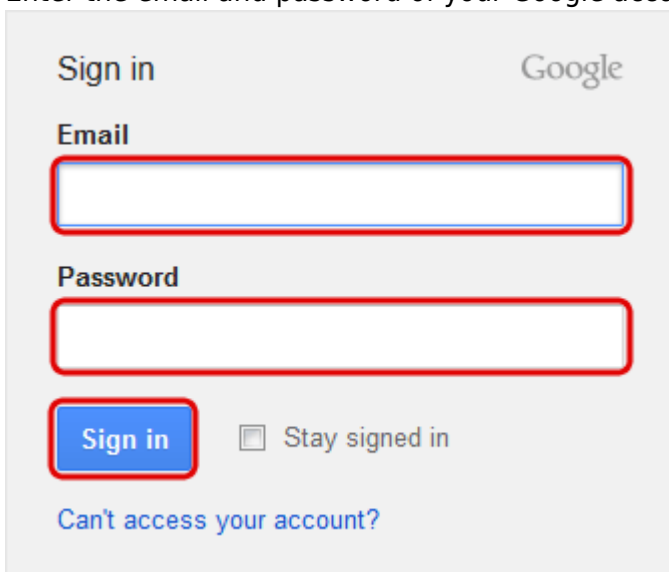
YouTube

The YouTube application allows you to post your videos from the network drive to your YouTube account.

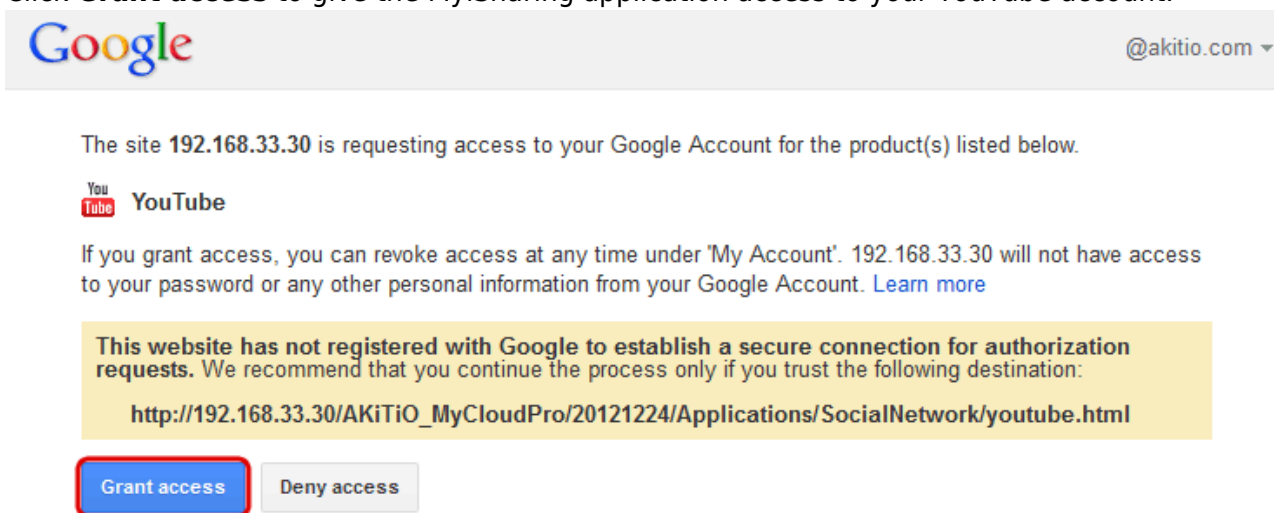
1. Click on the **YouTube** icon to open the application.
2. Depending on your browser's security settings, you may have to temporarily **allow pop-up windows** in order to login to YouTube. Please keep an eye on any warnings from your browser after you click on the YouTube icon.
3. Click **Login** to log into your YouTube account.



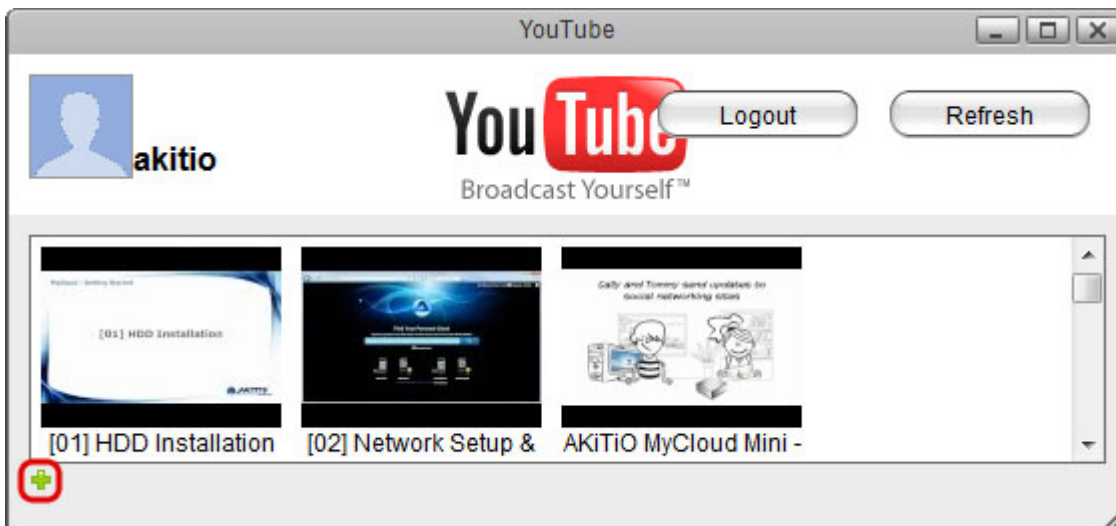
4. Enter the email and password of your Google account and click **Sign in**.



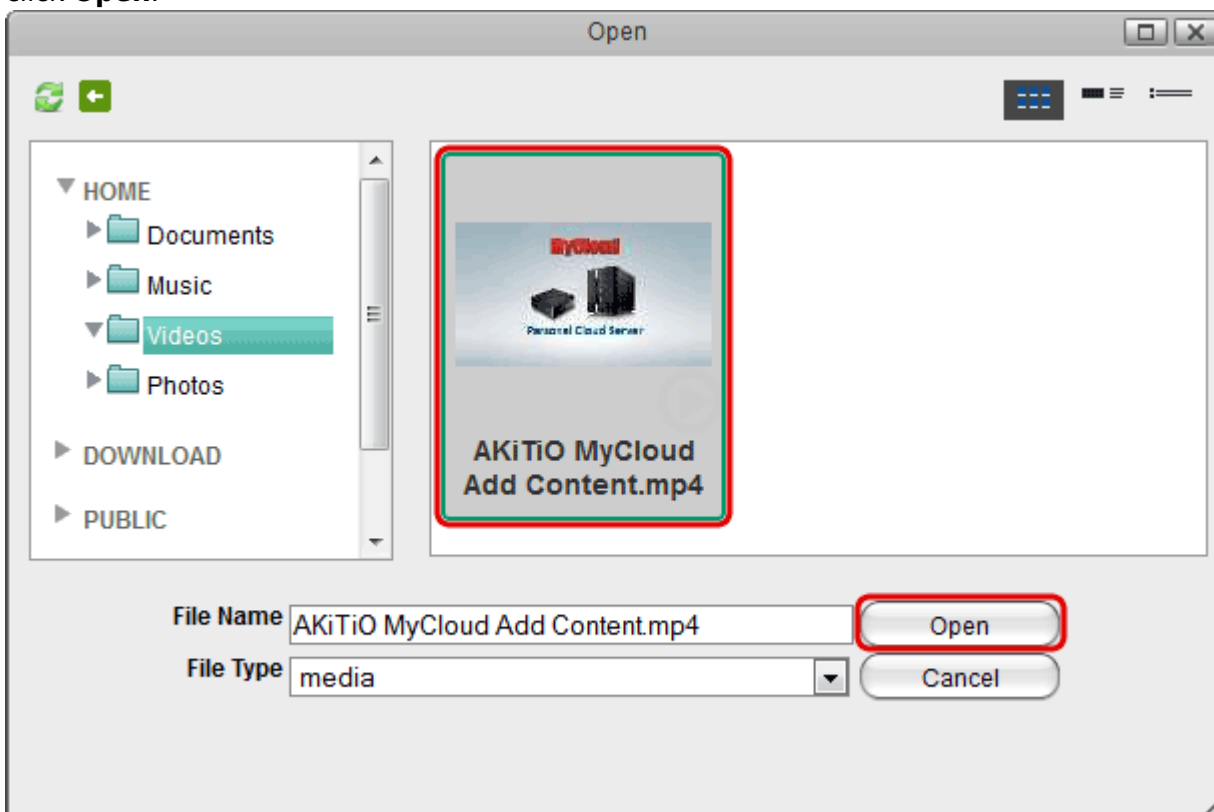
5. Click **Grant access** to give the MyiSharing application access to your YouTube account.



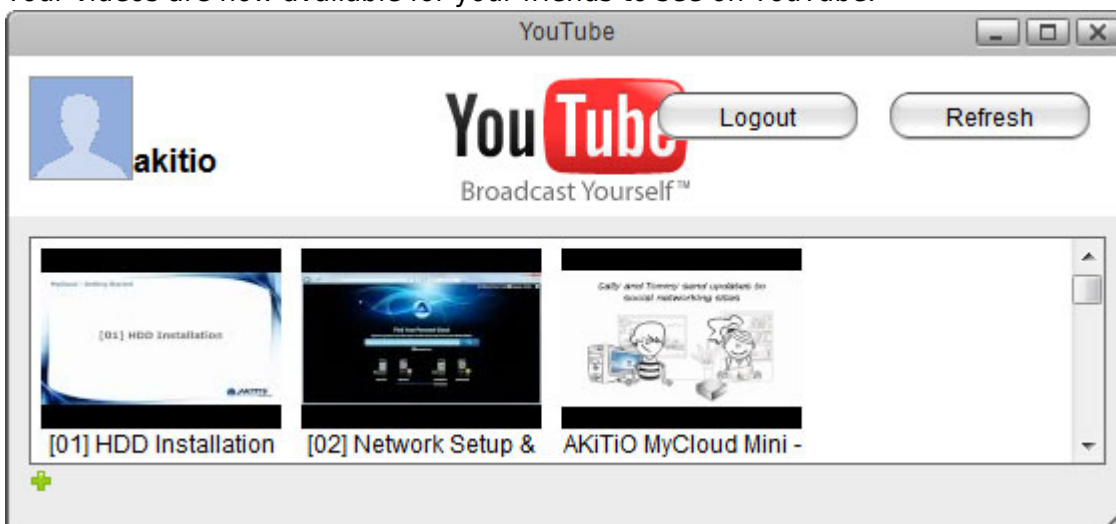
6. Click on the green **plus** sign to add some new videos.



7. Locate the videos that you would like to upload to your YouTube account, select them and then click **Open**.



8. Your videos are now available for your friends to see on YouTube.





Depending on your browser's security settings, you may have to temporarily **allow pop-up windows** in order to login

From:

<http://wiki.myakitio.com/> - **MyAkitio Wiki**

Permanent link:

http://wiki.myakitio.com/applications_social_network

Last update: **2013/03/12 03:50**

