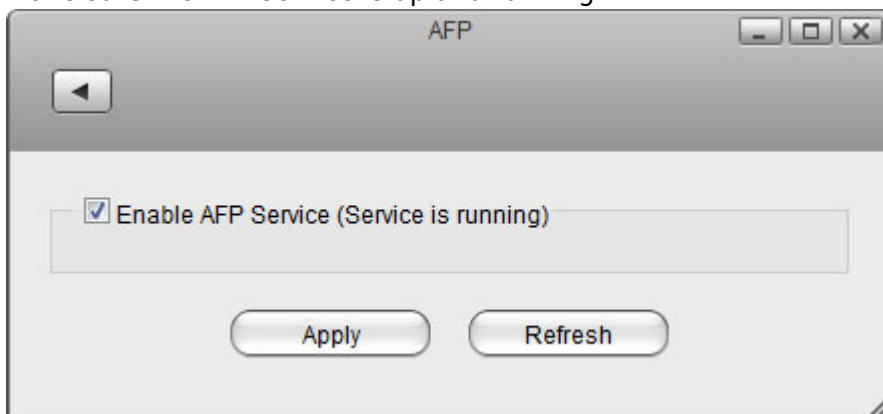


# Time Machine

In order for Mac users to use the network drive as backup destination for the Time Machine, the AFP service on the network drive has to be enabled and Time Machine needs to support unsupported network volumes.

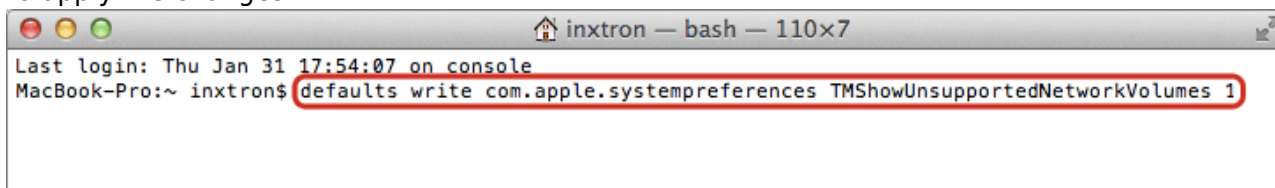
## Setup AFP Service

1. Login to your network drive as administrator.
2. Go to [Preferences > AFP](#).
3. Make sure the AFP service is up and running.

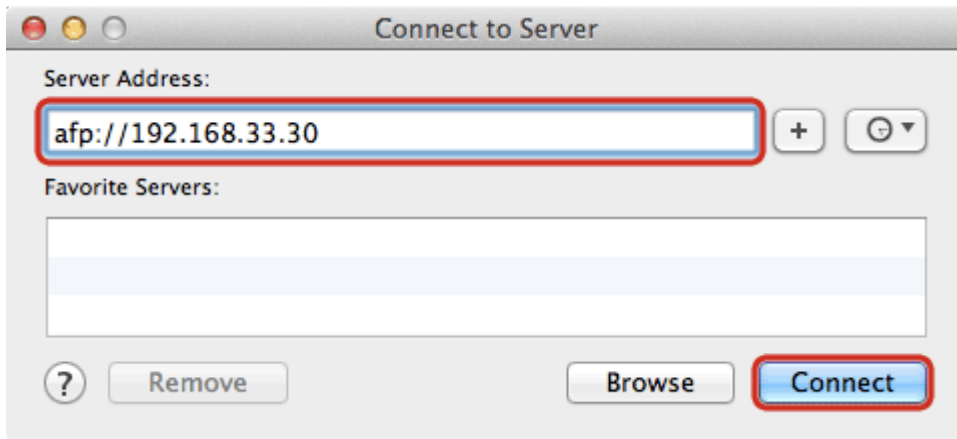


## Setup Time Machine

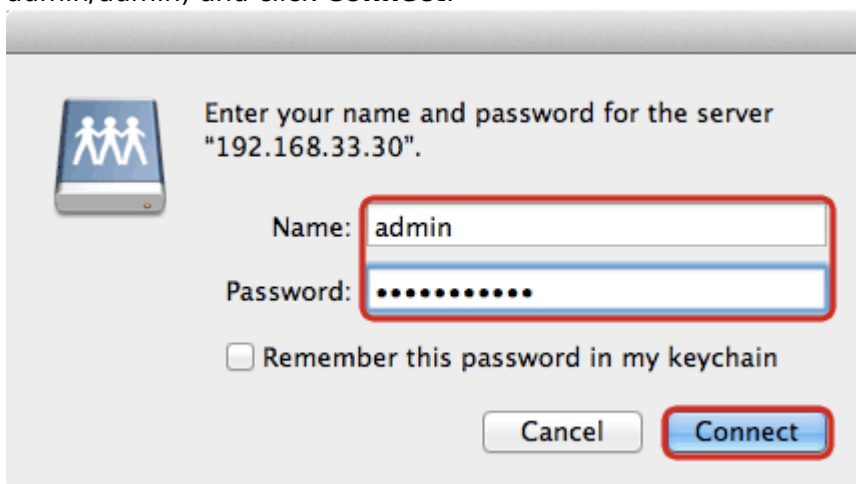
1. On your Mac, go to Applications > Utilities and launch the **Terminal**.
2. Type **defaults write com.apple.systempreferences TMShowUnsupportedNetworkVolumes 1** and then press the **Return** key on your keyboard to apply the changes.



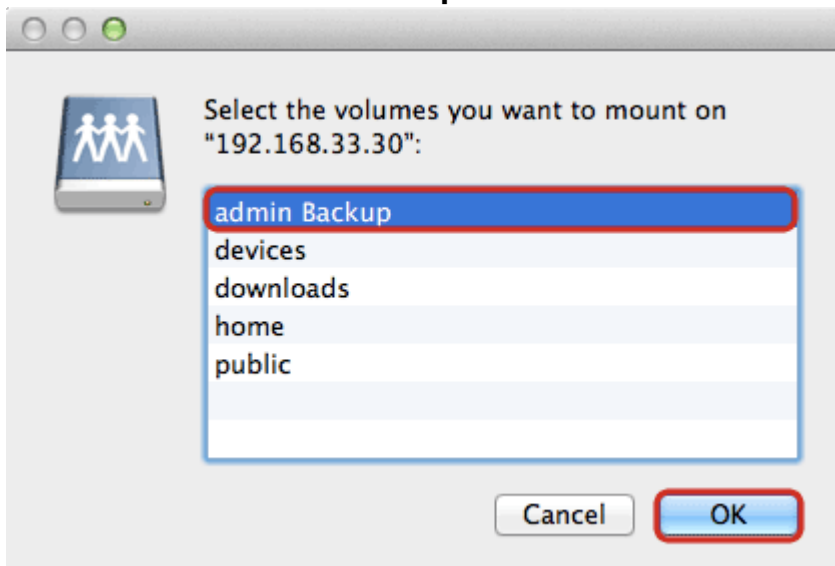
3. From the **Go** menu in the menu bar choose **Connect to Server** or use the keyboard shortcut **Command+K**.
4. Type **afp://** followed by the local **IP address** (e.g. 192.168.1.10) of your network drive and click **Connect**.



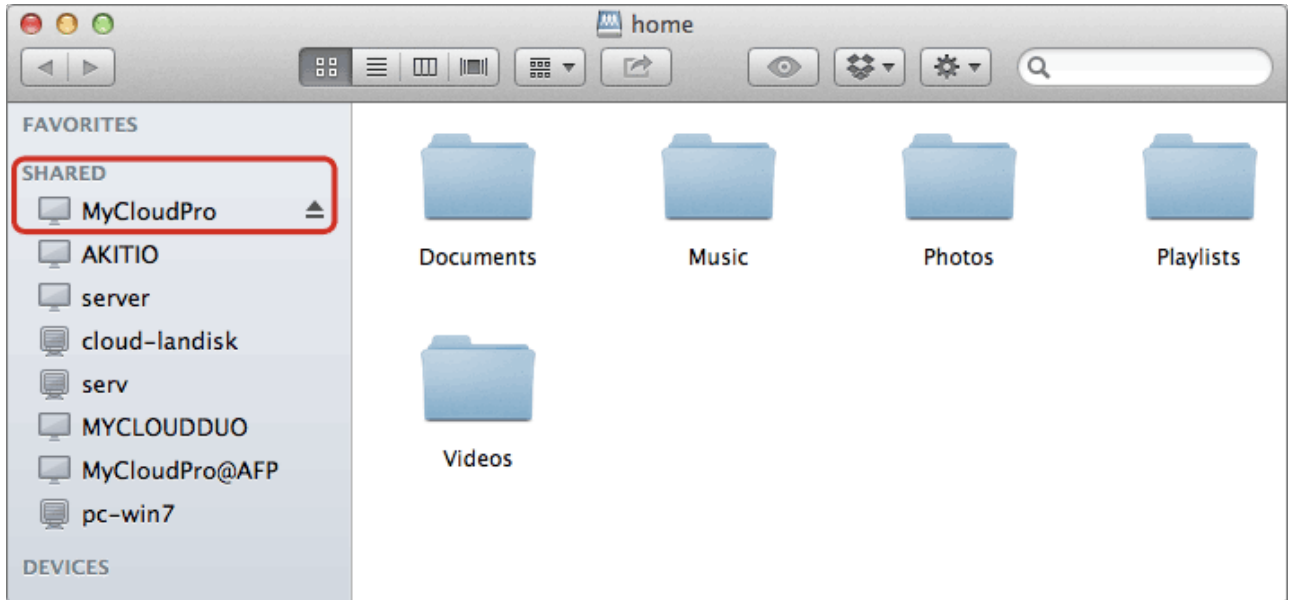
5. Enter the login credentials of the administrator account on the network drive (e.g. admin/admin) and click **Connect**.



6. Choose the folder **admin Backup** from the list and click **OK**.



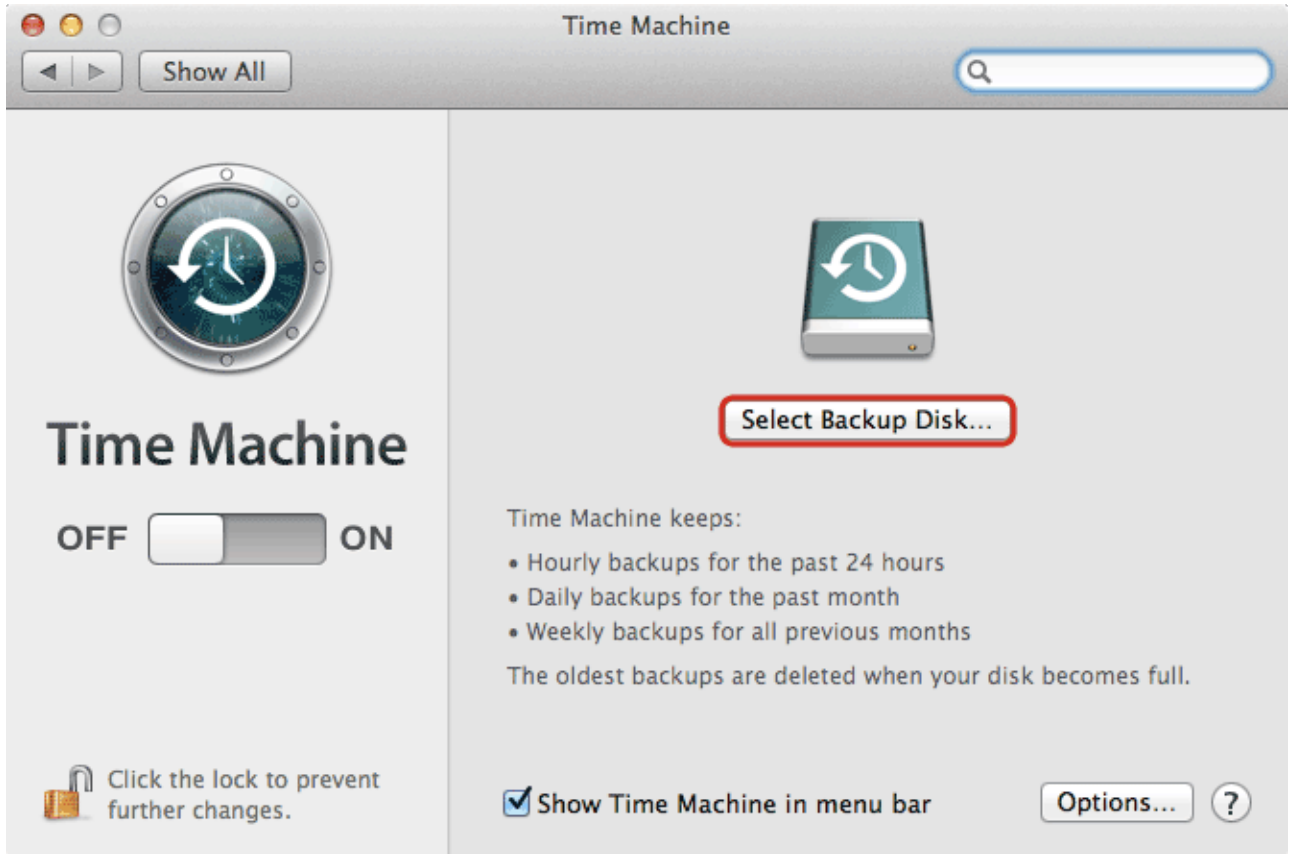
7. The network drive is now listed in your finder under **Shared** devices.



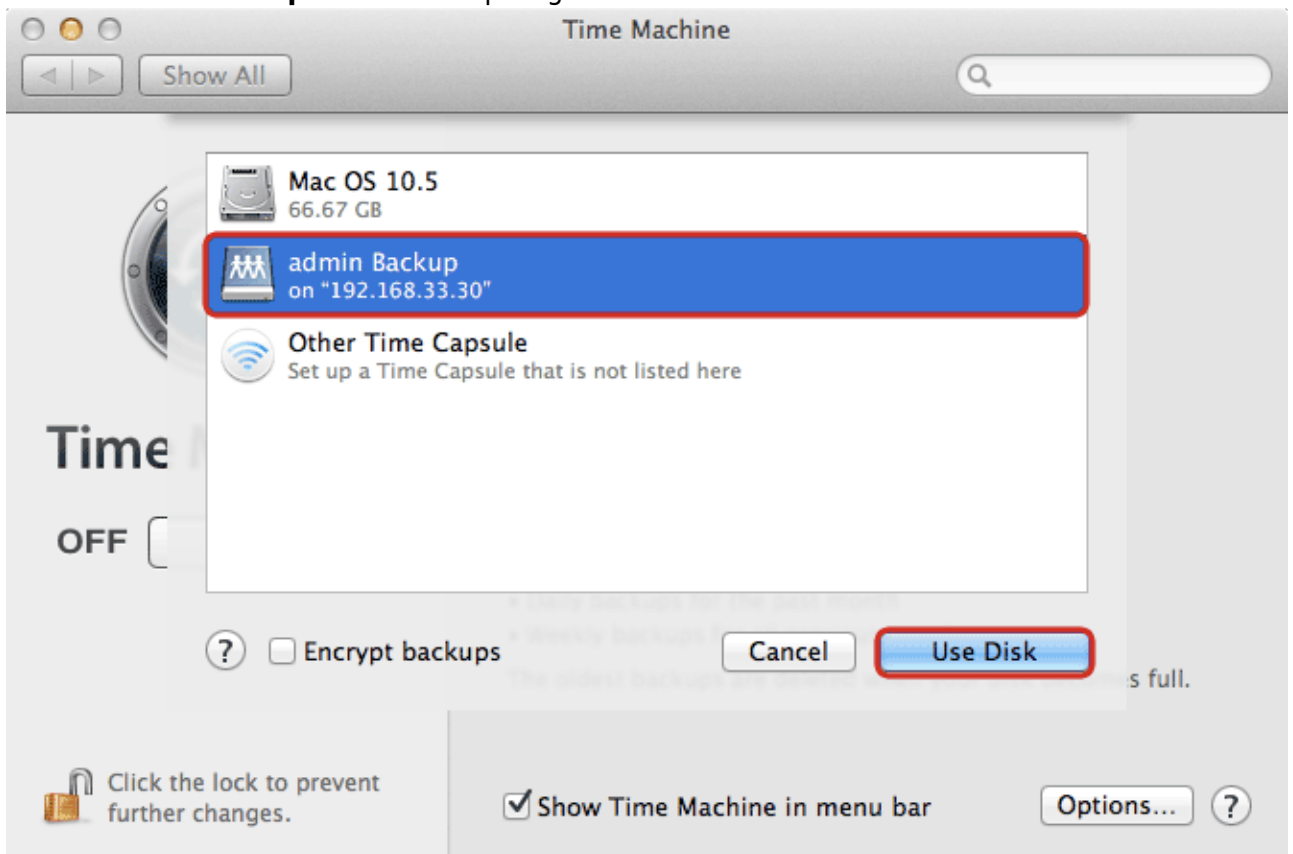
8. Launch **Time Machine**.



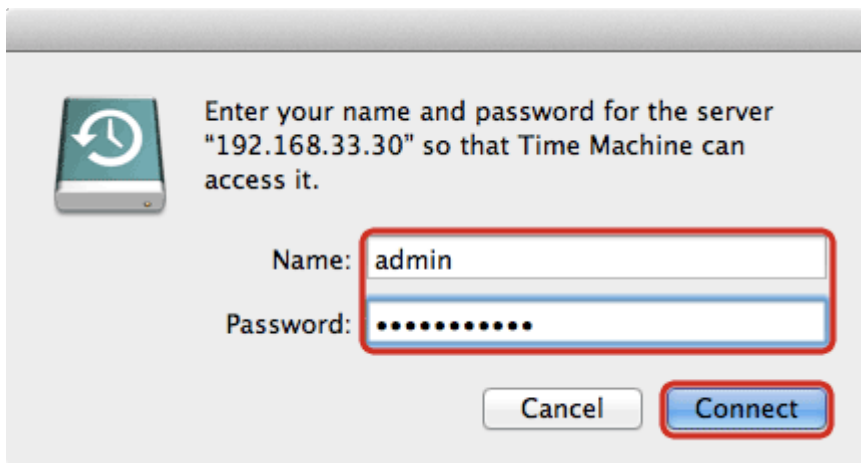
9. Click **Select Backup Disk...**



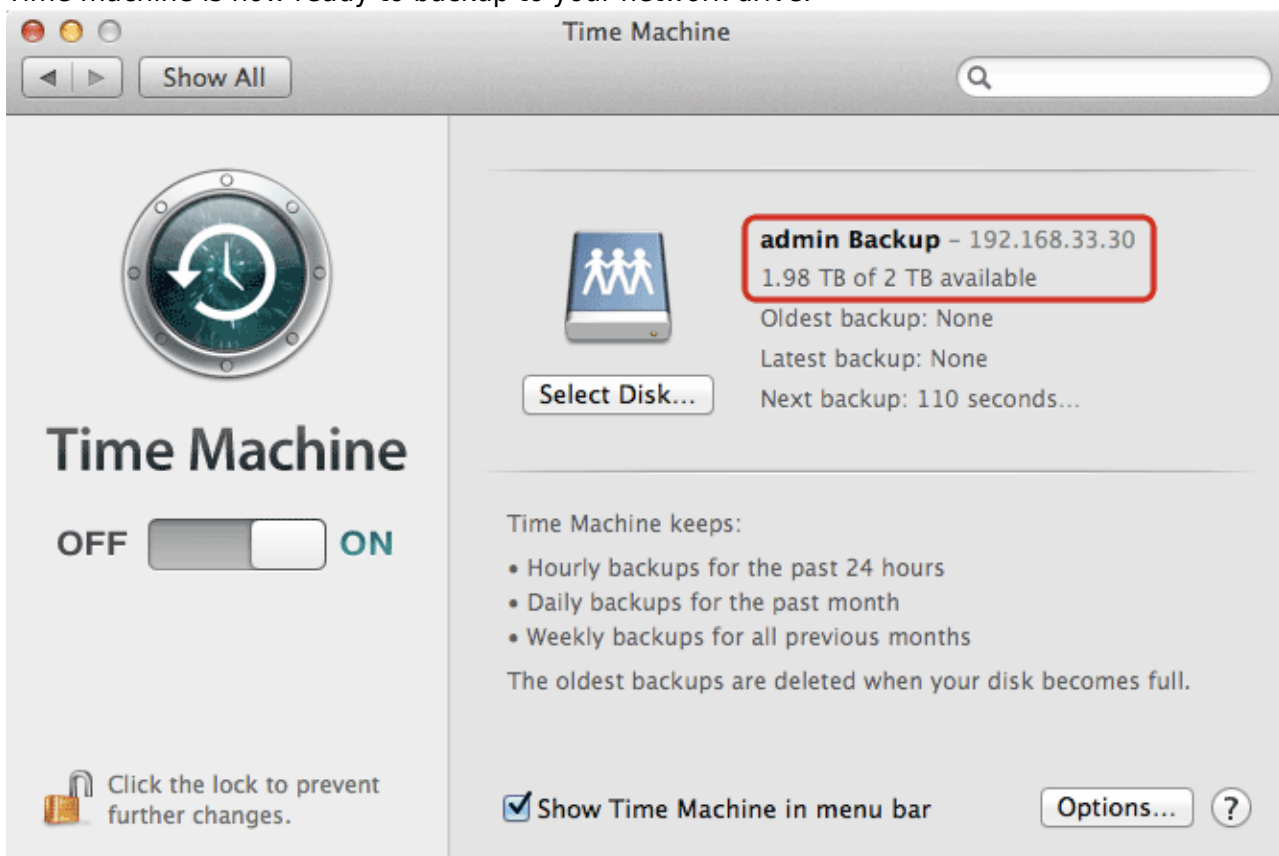
10. Select **admin Backup** as the backup target and click **Use Disk**.



11. Enter the username and password for the administrator account on your network drive (e.g. admin/admin).



12. Time machine is now ready to backup to your network drive.



From:  
<http://wiki.myakitio.com/> - **MyAkitio Wiki**

Permanent link:  
[http://wiki.myakitio.com/fm\\_time\\_machine](http://wiki.myakitio.com/fm_time_machine)

Last update: **2013/01/31 09:59**

