

AFP on a Mac

The Apple Filing Protocol (AFP) is a network protocol that offers file services for the Mac OS. If you are not using Samba, this is the recommended method to upload and manage a large amount of files, including directories and sub-folders or very large files. Once the network drive is mounted, you can manage the files just like you would do with any other drive on the computer.



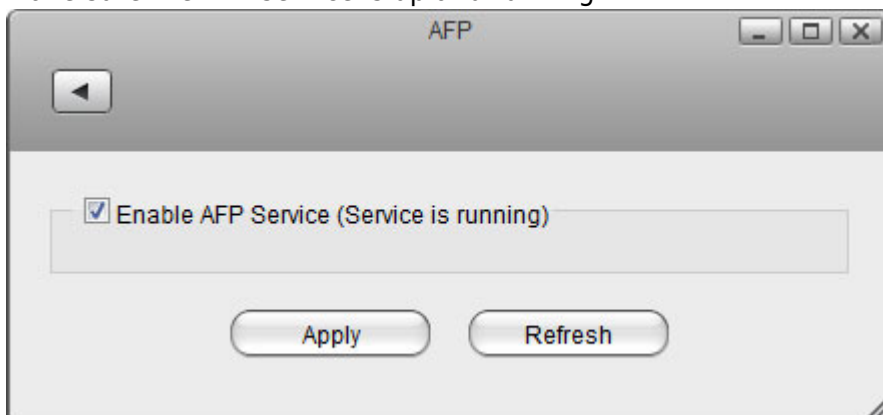
To change the host name of your network drive, go to [Preferences > Network](#).



You can only use AFP when both your network drive and the computer are connected to the same local network. If you are not at home and would like to access your files remotely, this method does not work. As an alternative, you could mount the drive using [WebDAV](#), although the transfer rates will be slower and there are some other limitations as well. Instead, you might want to consider using [FTP](#) or if you don't have to upload a large amount of files, simply use the [web interface](#).

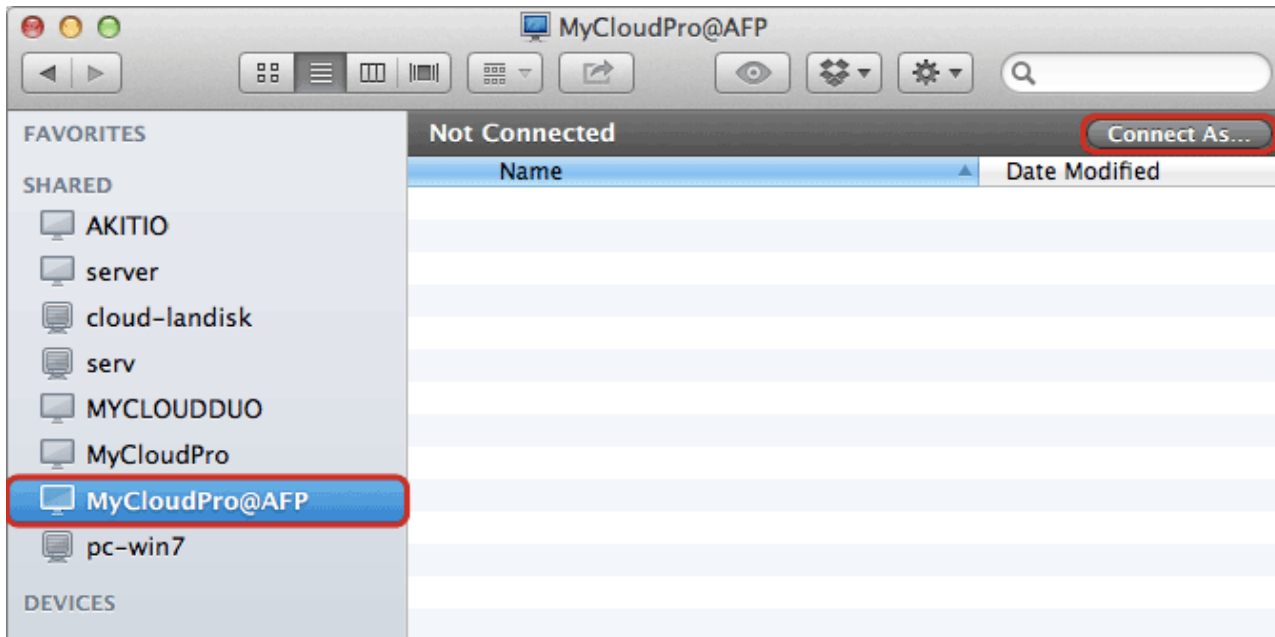
Setup AFP Service

1. Login to your network drive as administrator.
2. Go to [Preferences > AFP](#).
3. Make sure the AFP service is up and running.

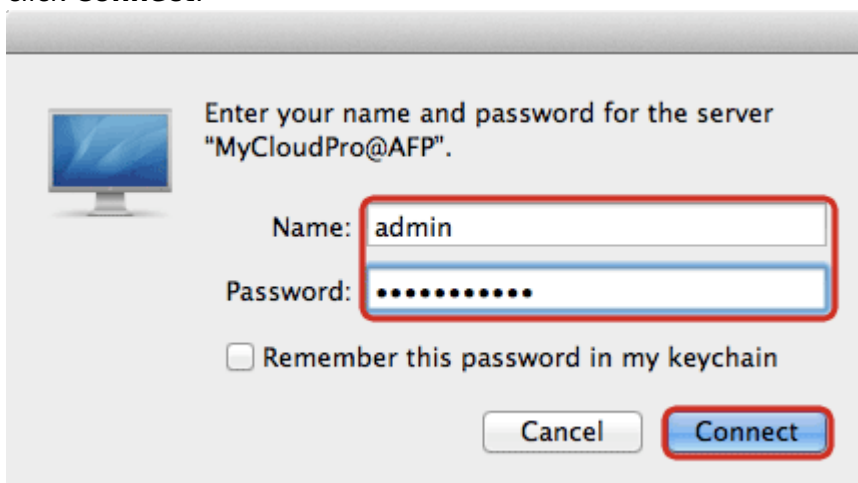


Finder

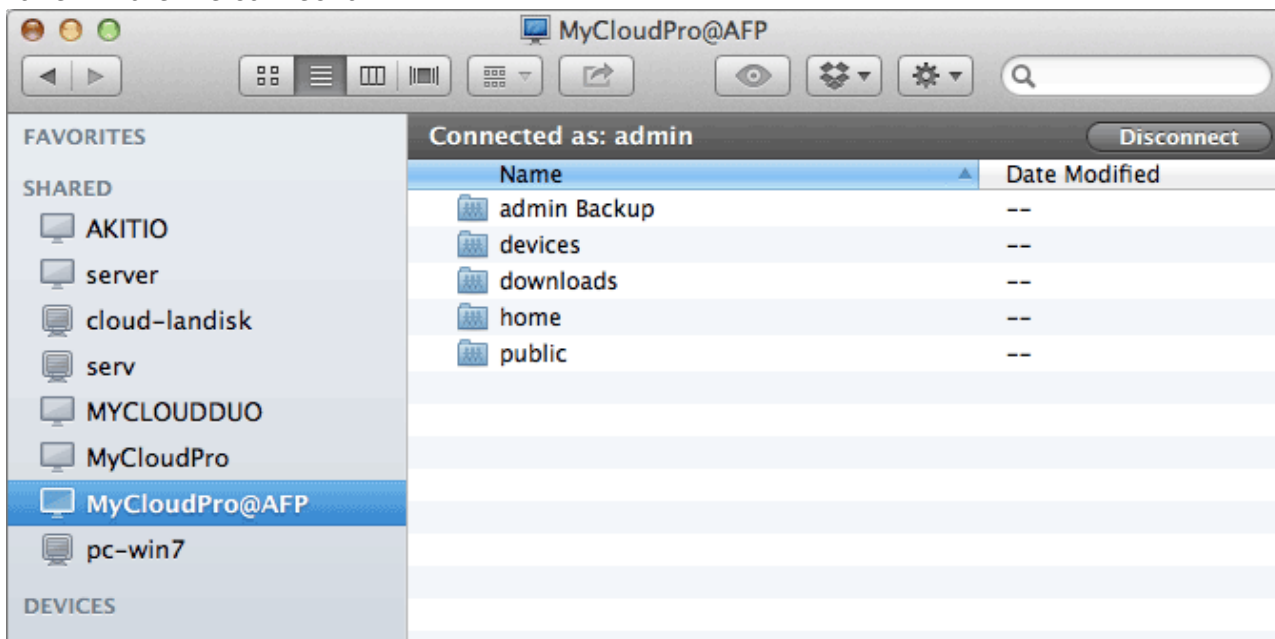
1. Open the finder.
2. Select your network drive from the list of **SHARED** devices and click **Connect As...**. Your device is listed under the name that you have set as host name with the addition of **@AFP**.



3. Enter the login credentials of your user account on the network drive (e.g. admin/admin) and click **Connect**.

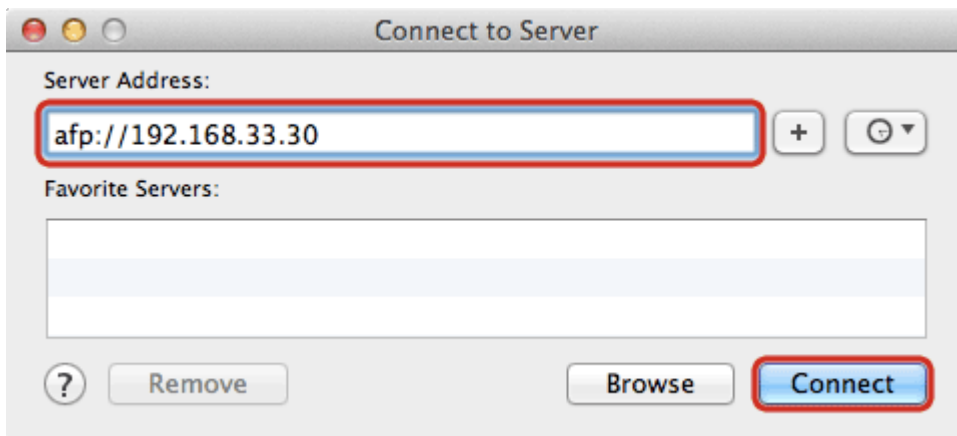


4. You can now access the data on your network drive. When no longer needed, click **Disconnect** to terminate the connection.

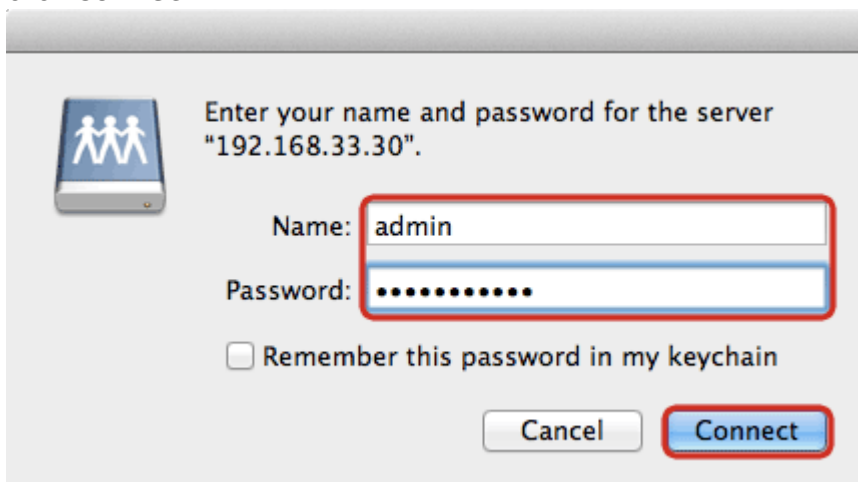


Connect to Server

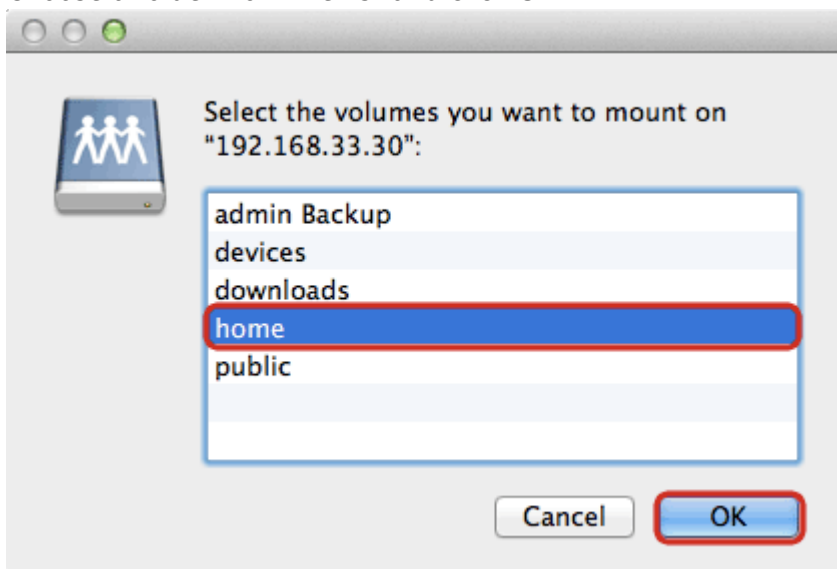
1. From the **Go** menu in the menu bar choose **Connect to Server** or use the keyboard shortcut **Command+K**.
2. Type **afp://** followed by the local **IP address** (e.g. 192.168.1.10) of your network drive and click **Connect**.



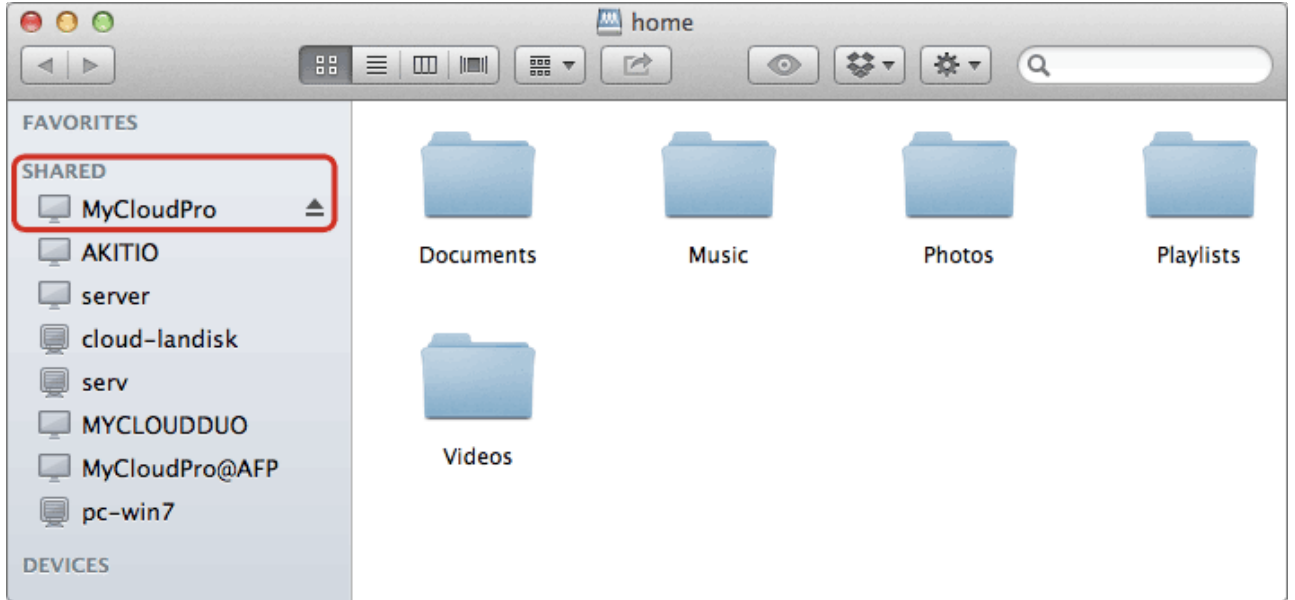
3. Enter the login credentials of your user account on the network drive (e.g. admin/admin) and click **Connect**.



4. Choose a folder from the list and click **OK**.



5. The network drive is now listed in your finder under **Shared** devices. When no longer needed, click on the eject button to disconnect the drive.



From: <http://wiki.myakitio.com/> - **MyAkitio Wiki**

Permanent link: http://wiki.myakitio.com/fm_afp_mac

Last update: **2013/01/31 10:00**

