

WebDAV on a Mac

WebDAV is used for the web interface, when uploading or downloading files through the web browser. It can also be used to mount the drive remotely, unlike Samba, which can only be used on the local network. However, the transfer rate is much slower and there are other limitations (e.g. file size) as well.



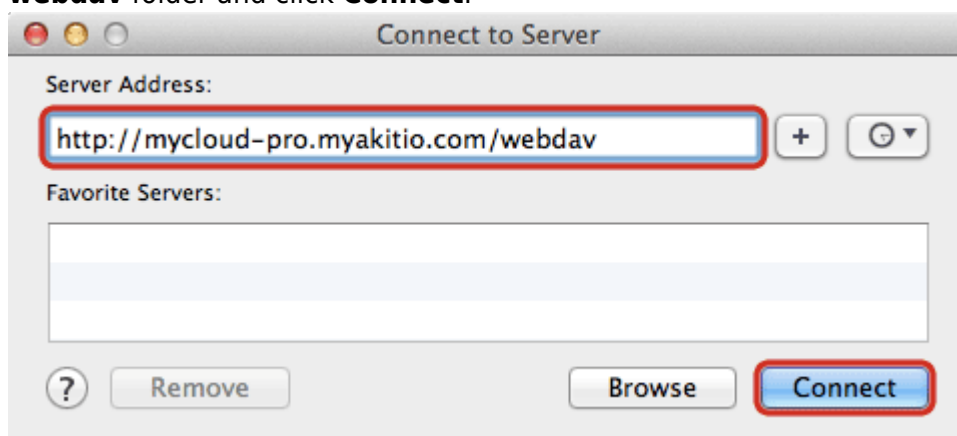
Whenever possible, we recommend using either [Samba](#) for the local network or [FTP](#) for remote access, rather than WebDAV. File transfers will be faster and more reliable.

Setup WebDAV Service

The WebDAV service is enabled and running by default. There are no settings to configure on the network drive.

Connect to Server

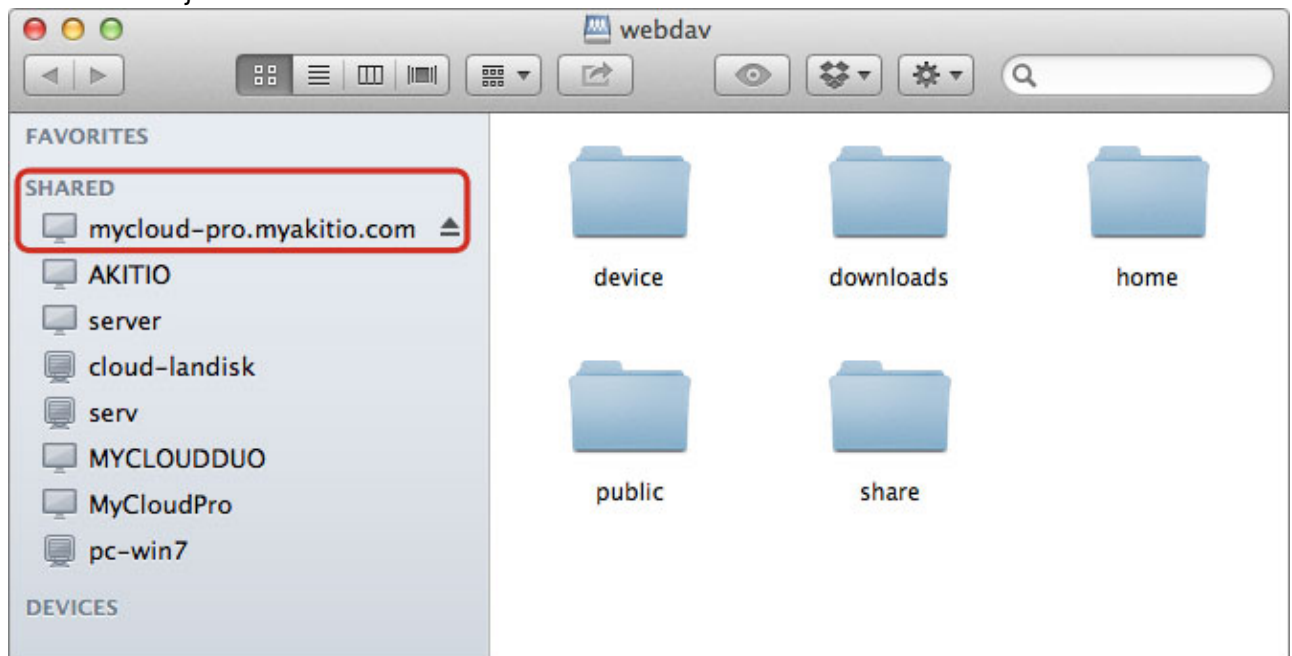
- To map the network drive on the home network (LAN), use the local IP address (e.g. **`http://192.168.1.10/webdav`**).
 - To map the network drive remotely (WAN), use the external IP address (e.g. **`http://121.85.21.144/webdav`**) or the device name (e.g. **`http://devicename.myakitio.com/webdav`**).
1. From the **Go** menu in the menu bar choose **Connect to Server** or use the keyboard shortcut **Command+K**.
 2. Enter **`http://`** followed by the device name and the web portal domain (e.g. **`http://mycloud-pro.myakitio.com`**) or the IP address (e.g. **`http://192.168.1.10`**) plus the **`webdav`** folder and click **Connect**.



3. Select **Registered User**, enter the login credentials of your user account on the network drive (e.g. admin/admin) and click **Connect**.



4. The network drive is now listed in your finder under **Shared** devices. When no longer needed, click on the eject button to disconnect the drive.

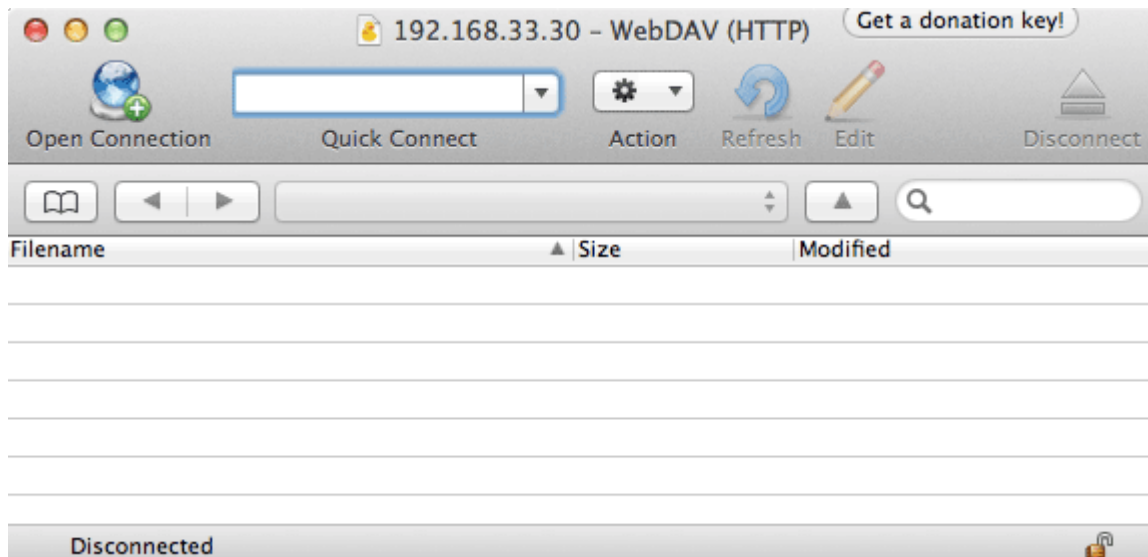


WebDAV Client

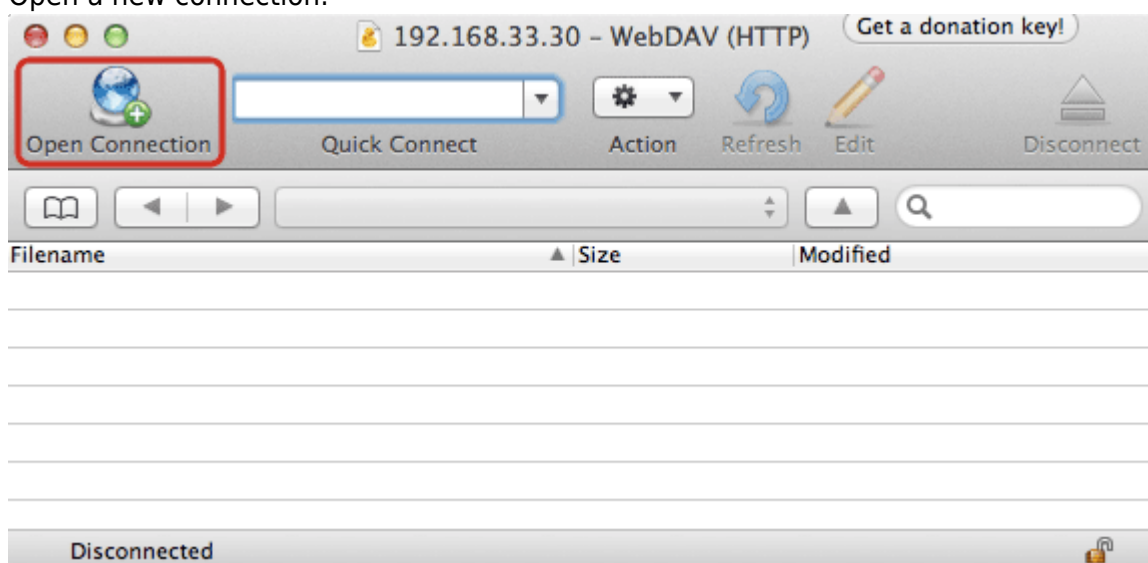
With a 3rd party WebDAV client, it's easier to manage multiple accounts and once you have setup an account, you can connect to it with a simple click of a button, without having to re-enter all your login credentials again. If you already have a WebDAV client or a FTP client that also supports WebDAV, simply use your preferred program. If you are still looking for a client, you could try the free program [Cyberduck](#).

- To access the network drive on the home network (LAN), use the local IP address (e.g. **<http://192.168.1.10/webdav>**).
- To access the network drive remotely (WAN), use the external IP address (e.g. **<http://121.85.21.144/webdav>**) or the device name (e.g. **<http://devicename.myakitio.com/webdav>**).

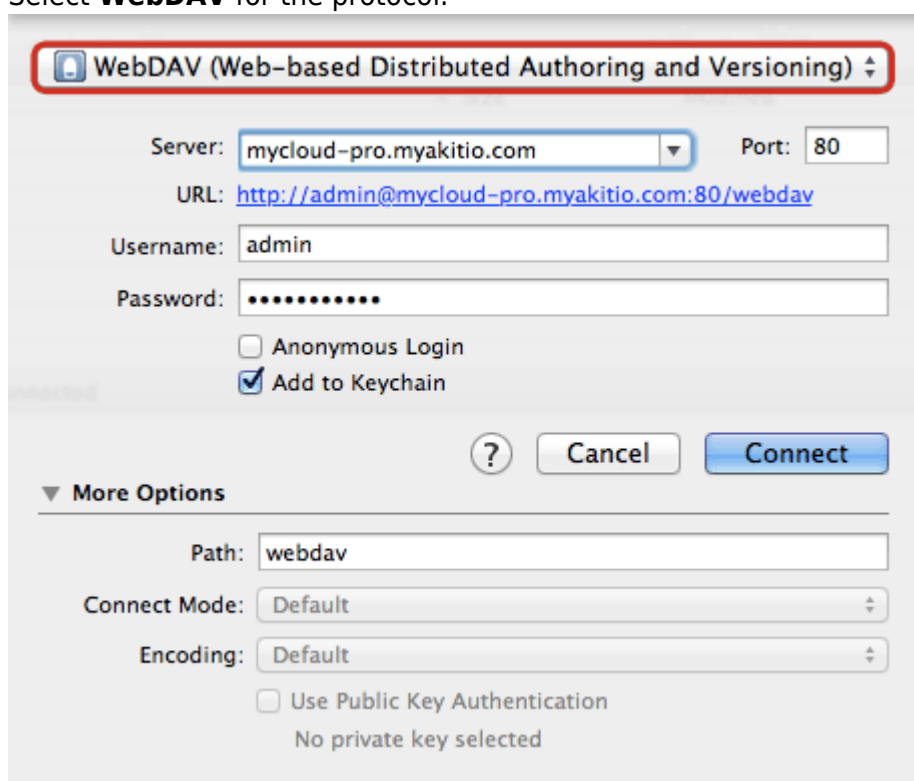
1. Start up your WebDAV client. In this example, we are using Cyberduck.



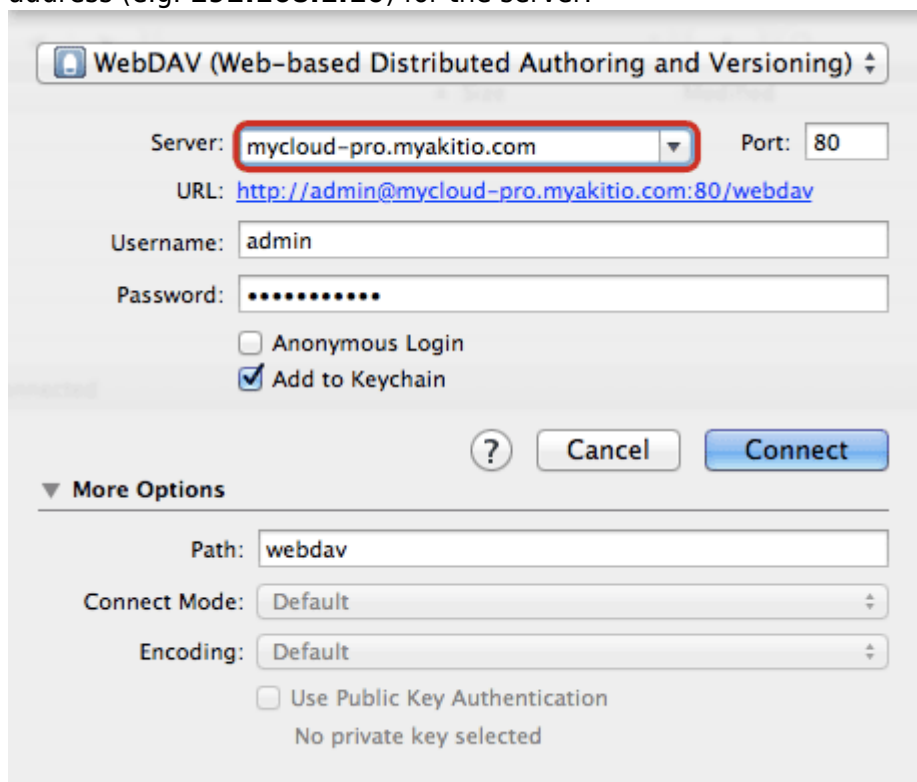
2. Open a new connection.



3. Select **WebDAV** for the protocol.

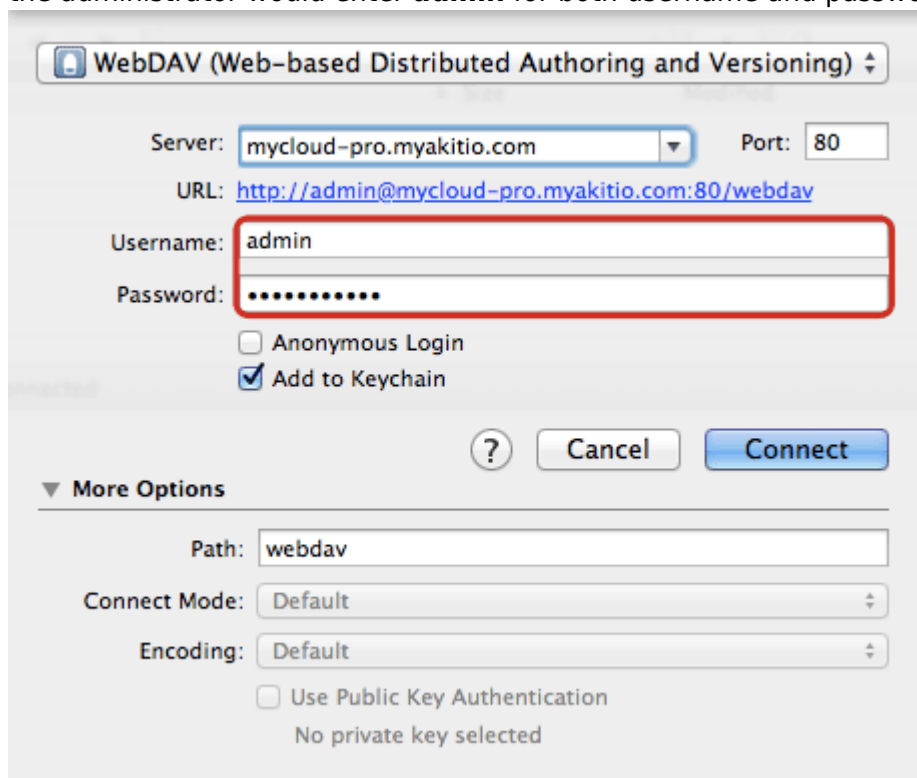


4. Enter the device name and the web portal domain (e.g. **mycloud-pro.myakitio.com**) or the IP address (e.g. **192.168.1.10**) for the server.



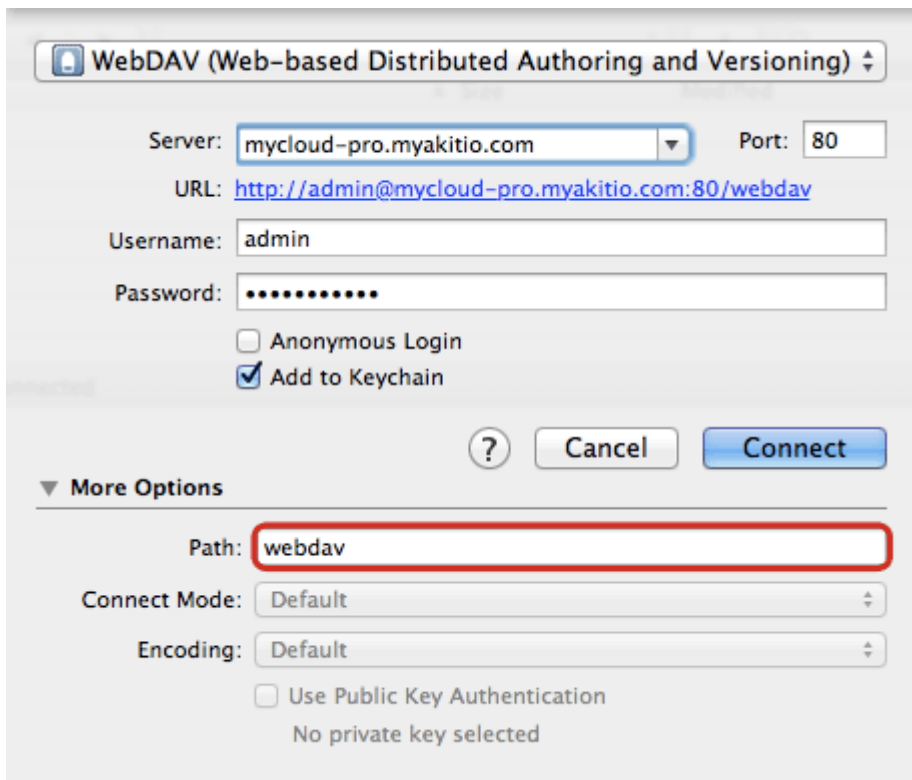
The image shows a 'WebDAV (Web-based Distributed Authoring and Versioning)' dialog box. The 'Server' field is highlighted with a red rectangle and contains 'mycloud-pro.myakitio.com'. The 'Port' field contains '80'. The 'URL' field shows 'http://admin@mycloud-pro.myakitio.com:80/webdav'. The 'Username' field contains 'admin' and the 'Password' field contains a masked password. There are checkboxes for 'Anonymous Login' (unchecked) and 'Add to Keychain' (checked). At the bottom, there are buttons for '?', 'Cancel', and 'Connect'. Below the main fields is a 'More Options' section with 'Path' set to 'webdav', 'Connect Mode' set to 'Default', and 'Encoding' set to 'Default'. There is also a checkbox for 'Use Public Key Authentication' which is unchecked, with the text 'No private key selected' below it.

5. Enter the username and password of your user account on the network drive. As an example, the administrator would enter **admin** for both username and password.



The image shows the same 'WebDAV' dialog box as before, but now the 'Username' and 'Password' fields are highlighted with a red rectangle. The 'Username' field contains 'admin' and the 'Password' field contains a masked password. The 'Server' field still contains 'mycloud-pro.myakitio.com' and the 'Port' field still contains '80'. The 'URL' field still shows 'http://admin@mycloud-pro.myakitio.com:80/webdav'. The 'Anonymous Login' checkbox is unchecked and the 'Add to Keychain' checkbox is checked. The 'More Options' section at the bottom remains the same, with 'Path' set to 'webdav', 'Connect Mode' set to 'Default', and 'Encoding' set to 'Default'. The 'Use Public Key Authentication' checkbox is still unchecked.

6. Enter **webdav** for the path.

A screenshot of a Mac's WebDAV connection dialog box. The title bar reads "WebDAV (Web-based Distributed Authoring and Versioning)". The "Server" field contains "mycloud-pro.myakitio.com" and the "Port" is "80". The "URL" field shows "http://admin@mycloud-pro.myakitio.com:80/webdav". The "Username" is "admin" and the "Password" is masked with dots. There are checkboxes for "Anonymous Login" (unchecked) and "Add to Keychain" (checked). At the bottom are buttons for "?", "Cancel", and "Connect". A section titled "More Options" is expanded, showing "Path" as "webdav", "Connect Mode" as "Default", and "Encoding" as "Default". It also includes a checkbox for "Use Public Key Authentication" (unchecked) with the text "No private key selected" below it.

WebDAV (Web-based Distributed Authoring and Versioning)

Server: mycloud-pro.myakitio.com Port: 80

URL: <http://admin@mycloud-pro.myakitio.com:80/webdav>

Username: admin

Password:

☐ Anonymous Login

☒ Add to Keychain

? Cancel Connect

▼ More Options

Path: webdav

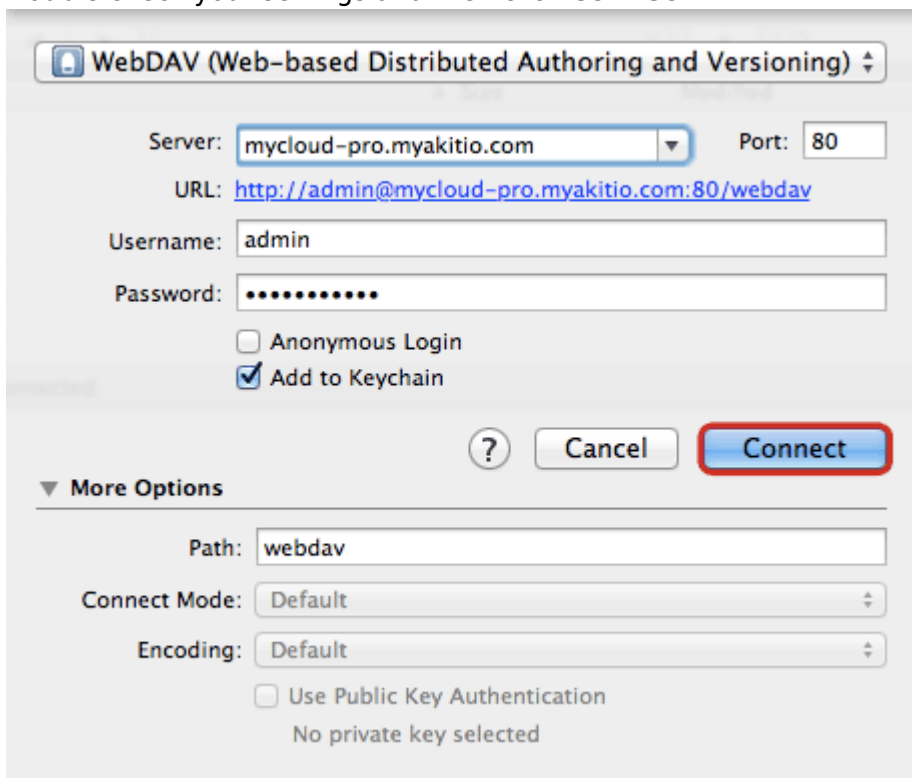
Connect Mode: Default

Encoding: Default

☐ Use Public Key Authentication

No private key selected

7. Double check your settings and then click **Connect**.

This is the same WebDAV connection dialog box as in the previous image, but with a red rectangular highlight around the "Connect" button at the bottom right of the main section.

WebDAV (Web-based Distributed Authoring and Versioning)

Server: mycloud-pro.myakitio.com Port: 80

URL: <http://admin@mycloud-pro.myakitio.com:80/webdav>

Username: admin

Password:

☐ Anonymous Login

☒ Add to Keychain

? Cancel **Connect**

▼ More Options

Path: webdav

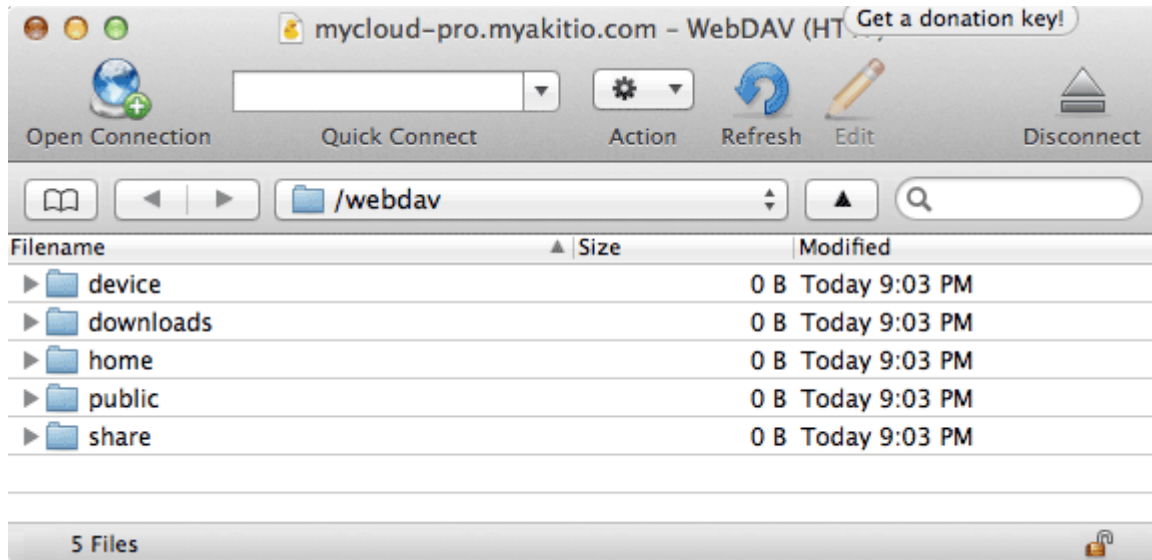
Connect Mode: Default

Encoding: Default

☐ Use Public Key Authentication

No private key selected

8. You can now manage your files on the network drive through the WebDAV client.



From:

<http://wiki.myakitio.com/> - MyAkitio Wiki

Permanent link:

http://wiki.myakitio.com/fm_webdav_mac

Last update: **2013/01/31 10:01**

