

Setup Guide

For the initial setup, it's important to prepare a hard drive that can be used as system drive. This should be a blank drive, because all existing data gets erased during the formatting process. In this guide, step 1 and 3 only have to be done once during the initial setup.



- Step 1 - HDD Installation
- Step 2 - Login
- Step 3 - HDD Setup
- Step 4 - Uploading Files
- Step 5 - Streaming Files
- Step 6 - Sharing Files

Step 1 - HDD Installation

For the system drive, we recommend using an internal hard drive. This should be a blank drive, because all existing data gets erased during the formatting process. Depending on the hardware, you can install either portable 2.5" hard drives or 3.5" desktop drives.

For more detailed instructions about how to install the hard drive, please select your model below:

- [MyCloud Mini](#)
- [MyCloud ONE](#)
- [MyCloud Duo](#)
- [MyCloud Pro](#)

Step 2 - Login

Since the MyAkitio web portal has been discontinued on August 31, 2019, it's now only possible to access the login page by entering the local IP address of your device directly into the URL field of the web browser.

1. Open your web browser (e.g. IE, Firefox, Safari, Chrome).
2. Enter the local IP address of your device directly into the URL field of your web browser.
3. Login to your account. The default user name and password for the administrator is **admin**. For security reasons, we strongly recommend changing the password after the first login.



If you don't know the local IP address of your device, login to your network router and lookup the IP address of your network drive in the DHCP log. As an alternative, you can

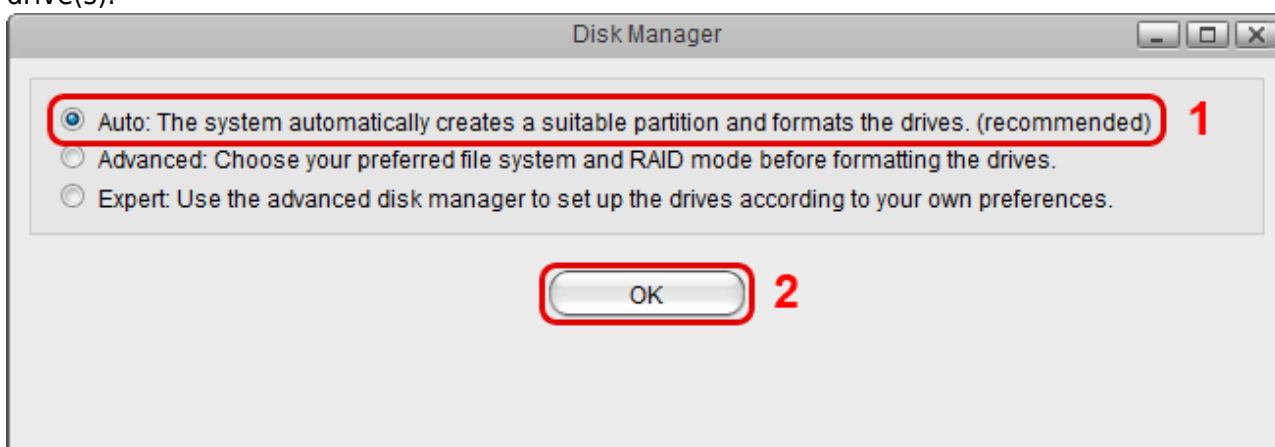


use the [Finder Utility on Windows](#) or the [Finder Utility on Mac](#) to scan the local network for your network drive and find out the correct IP address. Once you know the correct IP address, copy and paste it into the URL field of your web browser.

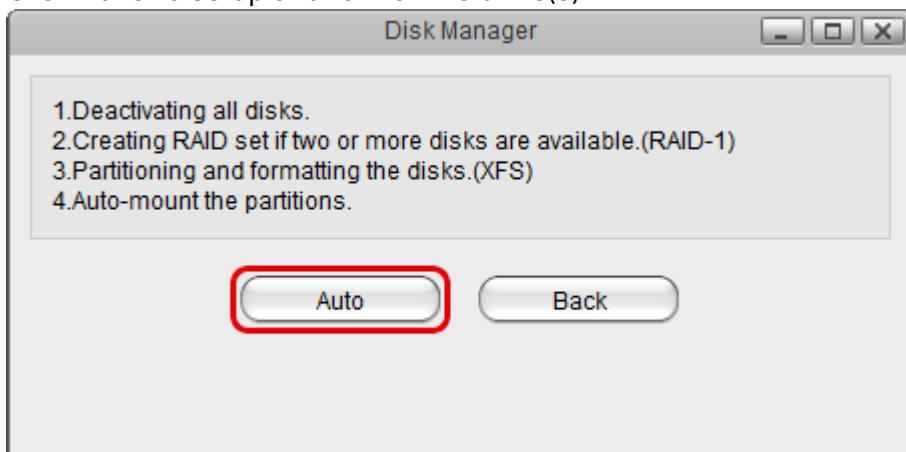
Step 3 - HDD Setup

Before you can properly use the device, a drive has to be setup as system drive. This includes creating a SWAP partition and a partition to store your digital media files that is mounted as HOME.

1. If you have not already done so, login as administrator (admin).
2. In the toolbar, click on the **disk manager**.
3. Select **Auto** and click **OK**. This will automatically create the necessary partitions and format the drive(s).



4. Click **Auto** to setup and format the drive(s).



The automatic setup wizard **Auto** only supports internal hard drives. If you want to use an external USB drive as your system drive, you need to use the **Expert** mode and manually create the partitions. See our FAQ for more detailed instructions about [how to setup an external USB drive as the main drive](#).



The MyCloud requires one drive to be setup as its system drive, preferably an internal drive and not an external USB drive. The file system that is used for that drive is XFS,

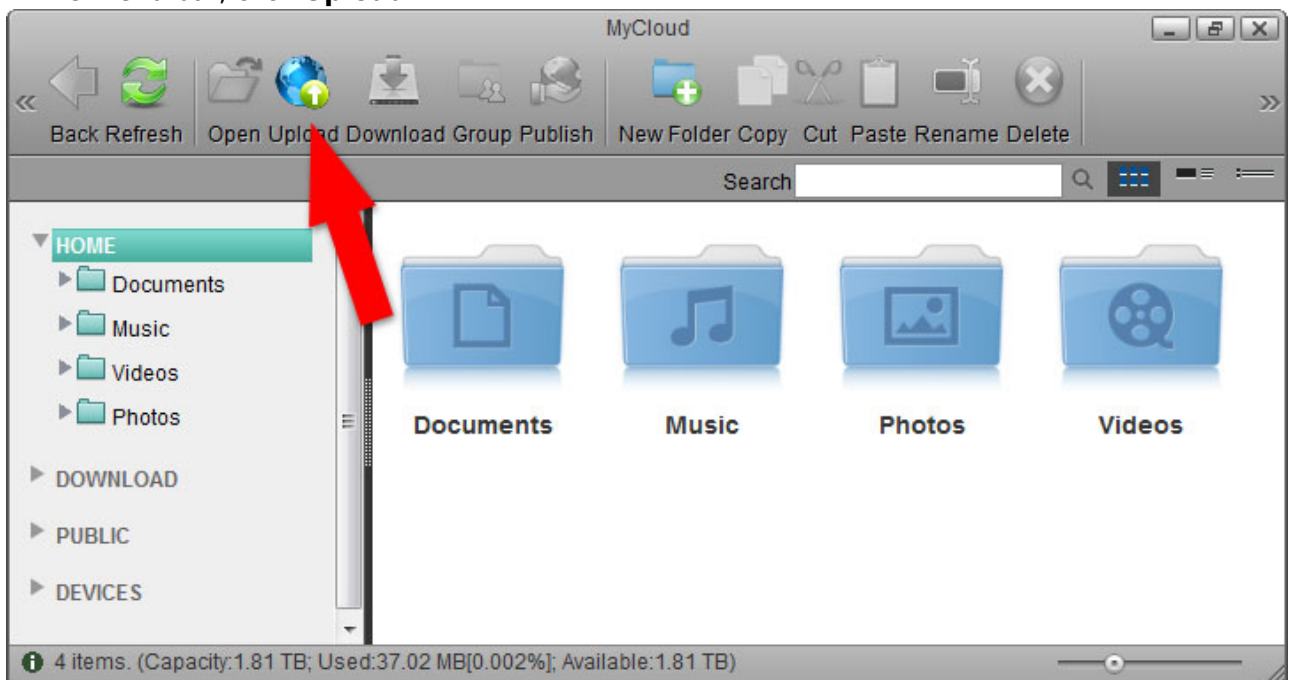


so if you remove the system drive from the MyCloud, you need another system (e.g. Linux) that is able to recognize and access that format if you would like to extract the data from the drive without the MyCloud.

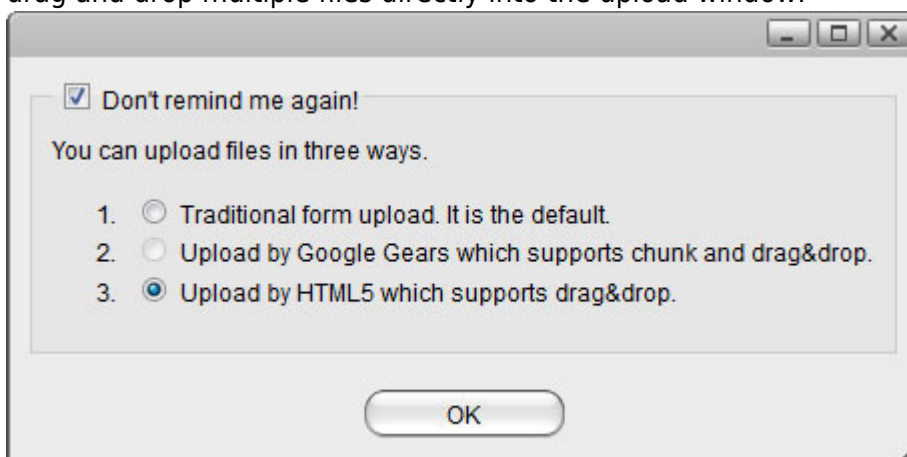
Step 4 - Uploading Files

Once the system drive has been setup, you can start uploading your digital media files to the network drive. The **HOME** directory with its predefined folders for documents, music, photos and videos is for your private files. The **PUBLIC** directory is for files that are shared among the users that have access to this device (by default, this is only the administrator).

1. On the desktop, click on **MyCloud** to open the file explorer window.
2. Depending on the files types you want to upload, select one of the predefined folders (e.g. Documents, Music, Photos, Videos).
3. In the menu bar, click **Upload**.



4. Select one of the available upload methods. If in doubt, select the traditional form upload. This will work on most browsers but you will have to upload the files one at the time. Instead, if you are running one of the more recent browsers, select **Upload by HTML5**, which allows you to drag and drop multiple files directly into the upload window.



5. Upload your media files.



Uploading files via web interface is only one of many different ways you can upload your files. On the home network, the easiest and fastest method is to mount the network drive via SMB. See [File Management > Samba for PC users](#) and [File Management > Samba for Mac users](#). For mobile devices, download and install the free MyCloud App, which is available for [iOS](#) and [Android](#).



To read more about the available methods that you can use to manage your files, see [File Management > Overview](#).

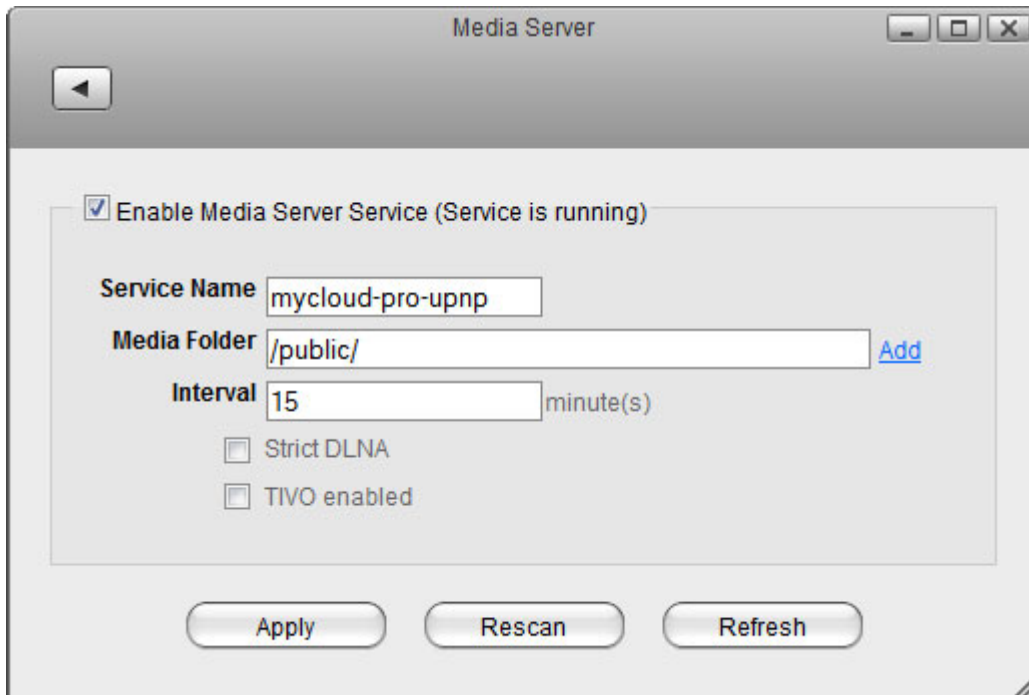
Step 5 - Streaming Files

Once you have uploaded your digital media files, you can setup the media server and the music server to stream your music and videos on the home network.

UPnP-AV Media Server

The media server streams your files to other UPnP-AV and DLNA compliant clients (e.g. PS3, Xbox360, Windows Media Player, etc.). To find DLNA compliant media devices that can play your media files on the network drive, look for the “DLNA Certified” logo or use the [Product Search on the official DLNA website](#).

1. In the toolbar, click on **Preferences**.
2. Select **Media Server**.
3. Make sure the service is enabled and running.
4. Click **Add** to select the folder(s) where your media files are stored. If needed, you can add multiple folders. The media server will scan for all the compatible media files in those directories and then stream them to the other UPnP-AV compliant devices on your home network.
5. Click **Apply** to save the settings.

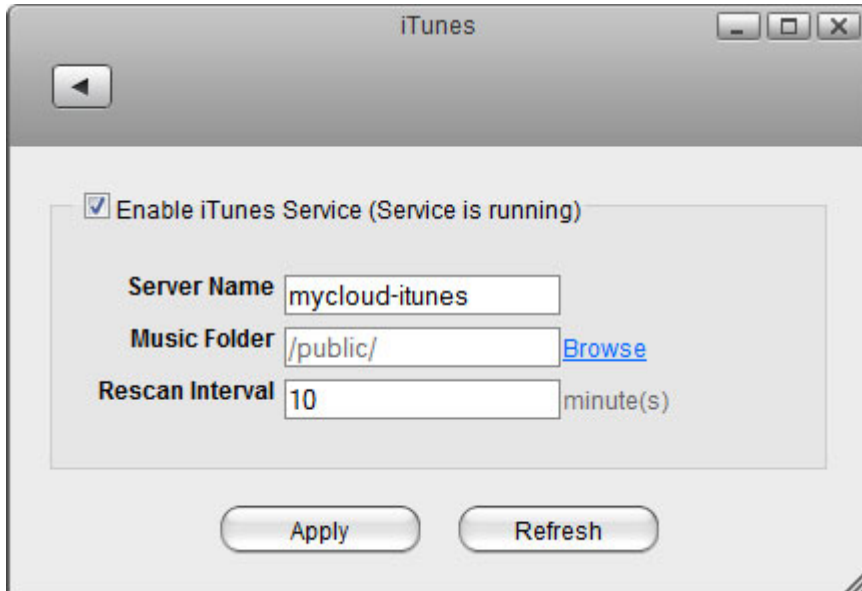


For more information, see [Preferences > Media Server](#) and [File Management > Media Server](#).

iTunes Music Server

The iTunes music server streams music files that are located on the network drive to iTunes users on the home network. Simply install iTunes on your PC or Mac and use it to playback the music files on your network drive.

1. In the toolbar, click on **Preferences**.
2. Select **iTunes**.
3. Make sure the service is enabled and running.
4. Click **Browse** to select the folder where your music files are stored.
5. Click **Apply** to save the settings.

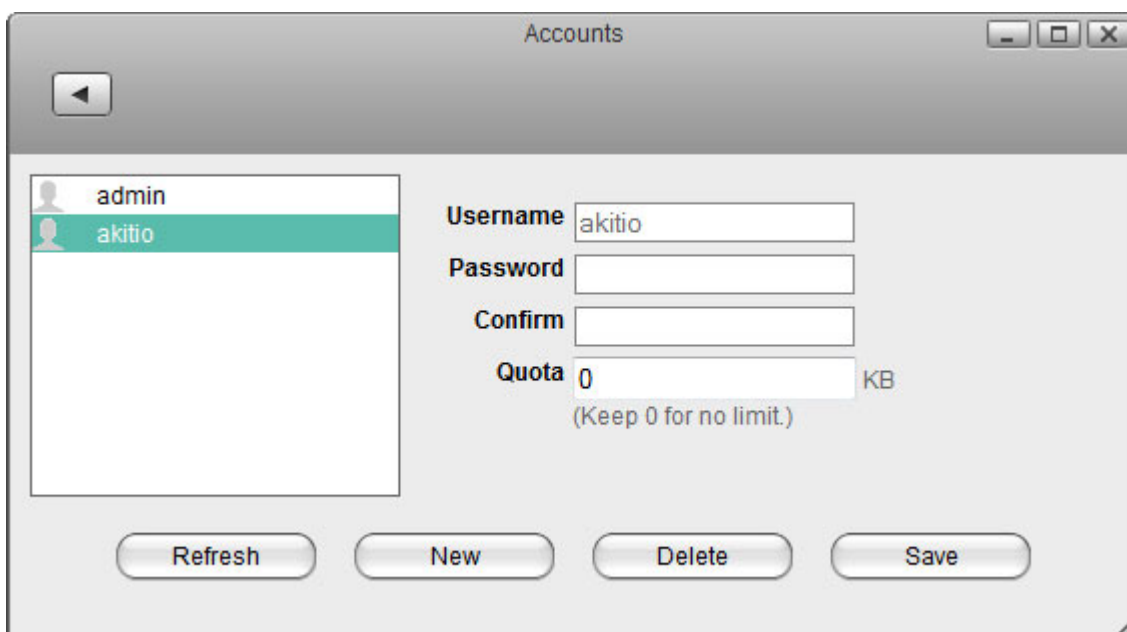


For more information, see [Preferences > iTunes](#) and [File Management > iTunes](#).

Step 6 - Sharing Files

There are several ways you can share files with your family and friends but before you start, it's easiest to give them a user account on the network drive.

1. In the toolbar, click on **Preferences**.
2. Select **Accounts**.
3. Click **New**.
4. Enter a username.
5. Enter a password and confirm it.
6. Click **Save** to create the new account.





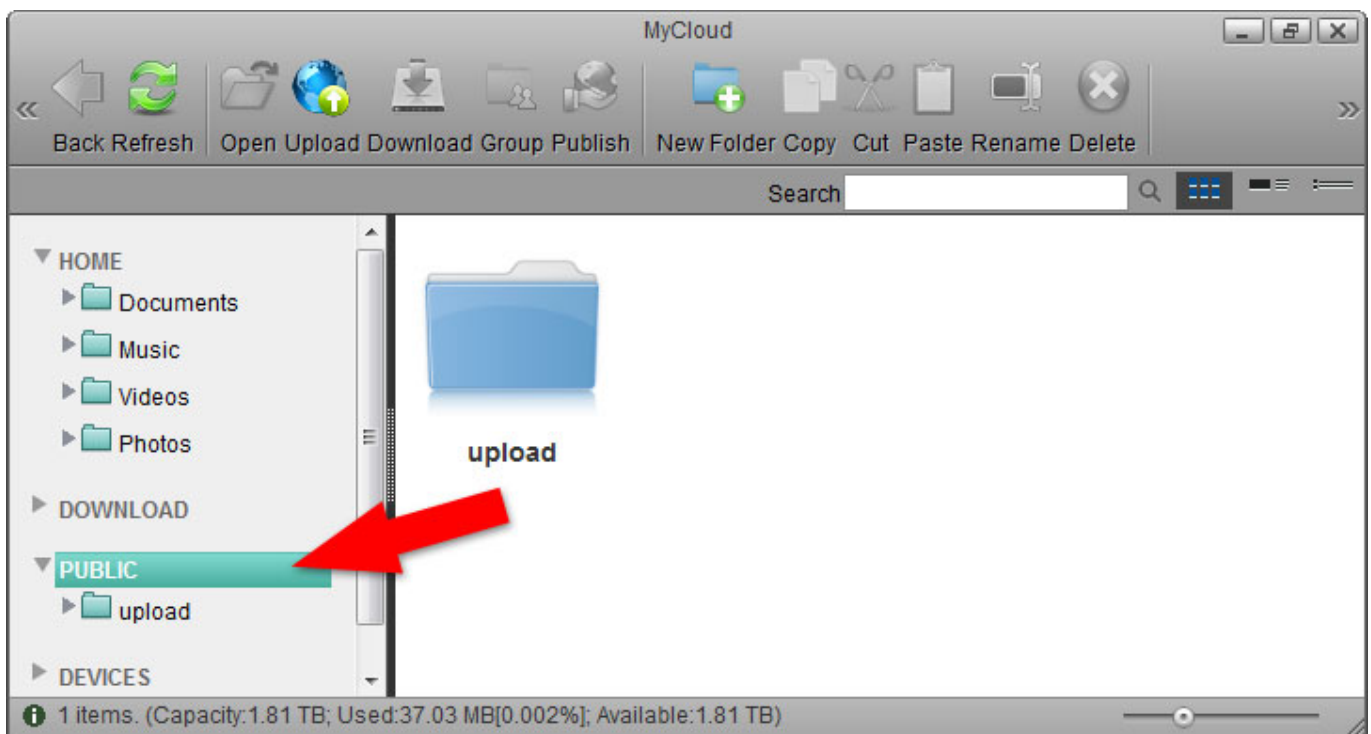
Each user gets its own **HOME** directory for private files and has access to the **PUBLIC** directory to share files among the different users.



For more information about user accounts, see [Preferences > Accounts](#).

Public Directory

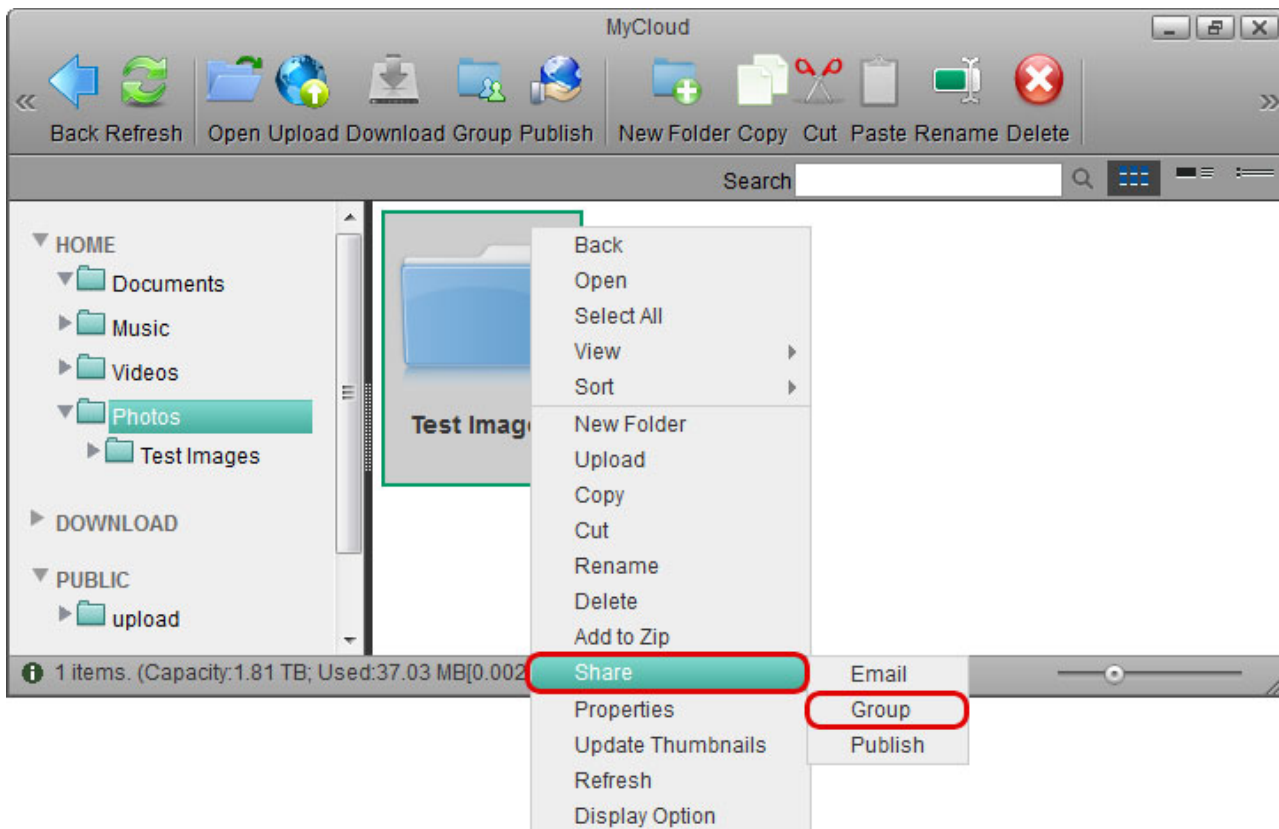
Files that are stored in the PUBLIC directory are accessible to all users (read & write). Simply copy a file to the PUBLIC folder and the next time another user logs in, they can view it. It doesn't matter if the user logs in via web interface or mounts the network drive on the home network.



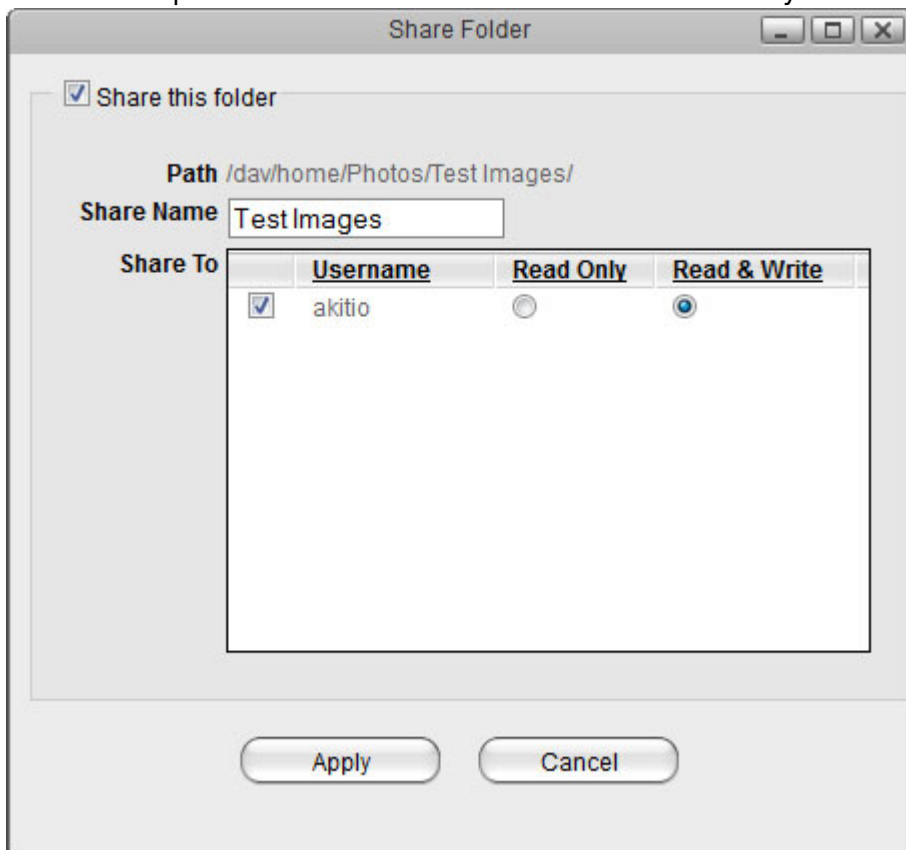
Sharing a Folder

If you want to share files with other users but restrict access, as an example only to certain users or give them only read access, you can use the context menu in the web interface.

1. On the desktop, click on **MyCloud** to open the file explorer window.
2. Right-click on the folder you want to share to open the context menu.
3. Select **Share** and click **Group**.

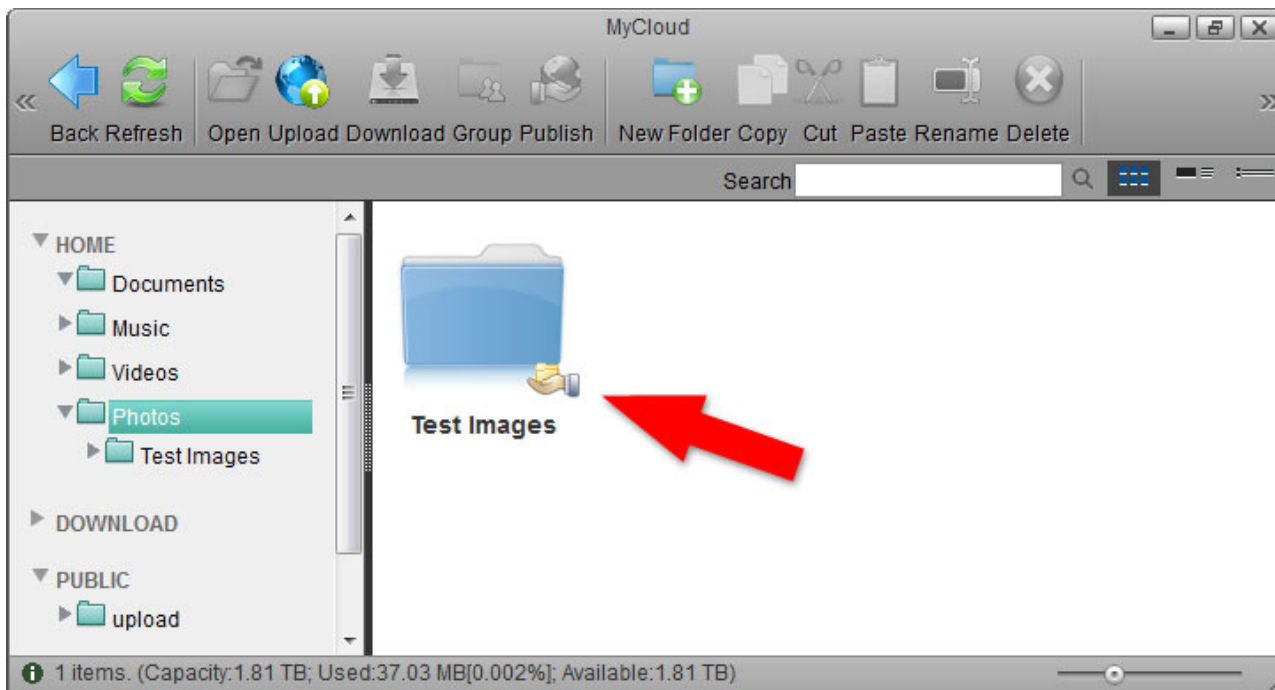


4. Enable the option **Share this folder** and select the users you want to share the folder with.



5. Click **Apply** to save the settings.

6. Click **Refresh** and the folder icon shows a hand to indicate that this folder is currently shared.



If your friends do not have a user account, you can still share your files by selecting either **Email** or **Publish** instead of **Group**. This will create a public link, that you can then send to your friends. Clicking on it will open the album and display the files you have shared.



For more information about file sharing, please see [File Management > File Sharing](#).



A shared folder is only accessible via web interface. If you mount the drive via SMB or access it through FTP, the shared folders are not available.

From:
<http://wiki.myakitio.com/> - **MyAkitio Wiki**

Permanent link:
http://wiki.myakitio.com/setup_guide

Last update: **2019/09/02 01:17**

